

SUMMARY OF MAJOR MATERIAL ITEMS: ATMOS	
MATERIAL DESCRIPTION	QTY.
3/4" POLY PIPE	0
2" POLY PIPE	1131
4" POLY PIPE	120
8" POLY PIPE	4714
SERVICE TAP	3
POLY TIE-INS	0
BYPASS TIE-INS	1
2" SLEEVE	0
4" SLEEVE	464
6" SLEEVE	66
8" SLEEVE	0
10" SLEEVE	179
2" VALVE	7
4" VALVE	1
6" VALVE	0
8" VALVE	5
NON JOINT TRENCH (FT)	5965
Lots / Units Served (EA)	0

SYMBOL LEGEND	
3/4" SERVICE STUB	---
2" PE MAIN	---
4" PE MAIN	---
8" PE MAIN	---
PE INLINE TEE	⊥
PE REDUCER	⊃
SERVICE CAP W/ LINE MARKER BALL	⊙
MAIN LINE CAP W/ LINE MARKER BALL	⊙
COUPLING	⊕
TEST STATION	⊕
LINE MARKER	⊕
ANODE	⊕
LINE MARKER BALL	⊕

NOTE:
 1. ALL 3/4" SERVICE STUBS WILL HAVE A EFV
 2. MAIN TAPPING TEE FOR EACH SERVICE STUB.
 3. THE LOCATIONS SHOWN ARE APPROXIMATIONS AND ARE NOT INTENDED TO SHOW EXACT LOCATIONS.

CONTRACTOR NOTES:
 CONTRACTOR TO FIELD VERIFY LOCATION, TYPE, AND SIZE OF EXISTING UTILITIES. CONTRACTOR SHALL REPORT ANY DISCREPANCIES, OMISSIONS OR INCONSISTENCIES ON THE DRAWINGS TO THE ENGINEER FOR VERIFICATION BEFORE STARTING CONSTRUCTION. OWNER AND ENGINEER ARE NOT RESPONSIBLE FOR ANY ERRORS IN CONSTRUCTION WHERE SUCH DISCREPANCIES, OMISSIONS OR INCONSISTENCIES HAVE NOT BEEN PROPERLY REPORTED IN A TIMELY MANNER. CONTACT AUSTIN AREA "ONE CALL CENTER" AT 1-800-245-4545 FOR EXISTING UTILITY LOCATIONS.

CONTRACTOR IS RESPONSIBLE FOR CONTACTING D.U.C.T. AND ACQUIRING AUTHORIZATION PRIOR TO ANY FIELD MODIFICATIONS; OTHERWISE CONTRACTOR WILL BE RESPONSIBLE. AT CONTRACTOR'S COST, FOR ANY AND ALL COSTS ASSOCIATED WITH ANY REQUIRED CORRECTIVE ACTIVITIES.

IT IS THE INTENT OF THESE PLANS THAT ALL WORK BE IN ACCORDANCE WITH THE ELECTRIC UTILITY PROVIDER'S SPECIFICATIONS AND ANY AUTHORITY HAVING JURISDICTION. NOTHING IN THIS PLAN IS INTENDED TO VIOLATE ANY OF THOSE SPECIFICATIONS OR ANY REQUIREMENT OF AN AUTHORITY HAVING JURISDICTION. SHOULD THE CONTRACTOR, CIVIL ENGINEER, OR DEVELOPER BELIEVE THERE IS ANY CONFLICT, THEY ARE TO BRING THAT CONFLICT TO THE ATTENTION OF D.U.C.T. SO THAT THE POSSIBLE CONFLICT CAN BE ADDRESSED AND RESOLVED.

CASING NOTE:
 ALL ROAD CROSSINGS REQUIRE A PVC CASING:
 3/4" SERVICE - 2" PVC CASING
 1-1/4" SERVICE - 2" PVC CASING
 2" PE MAIN - 4" PVC CASING
 4" PE MAIN - 6" PVC CASING
 6" PE MAIN - 8" PVC CASING

TRENCH UNIT PRICE NOTE:
 TRENCH UNIT PRICE SHALL INCLUDE MISCELLANEOUS ITEMS SUCH AS TRACER WIRE, SAND BEDDING, BACKFILL, ETC.,

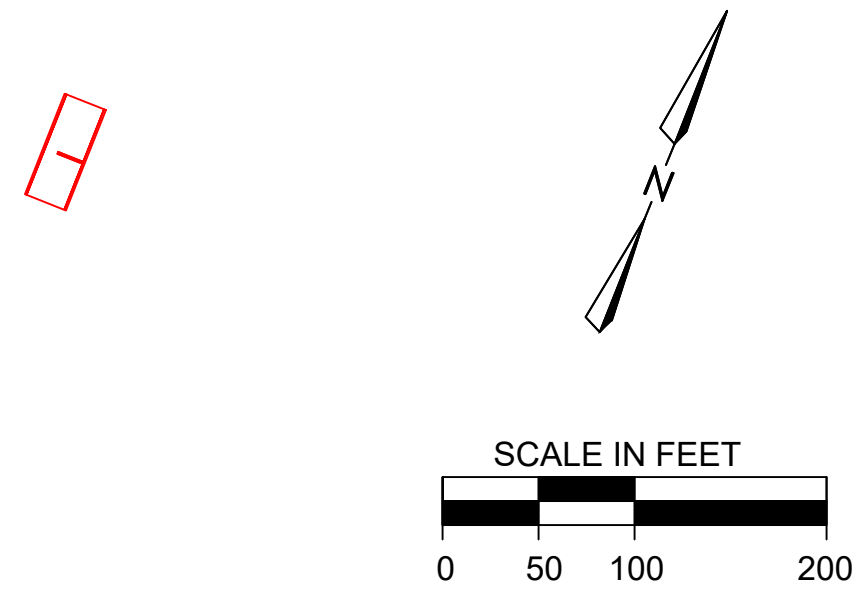
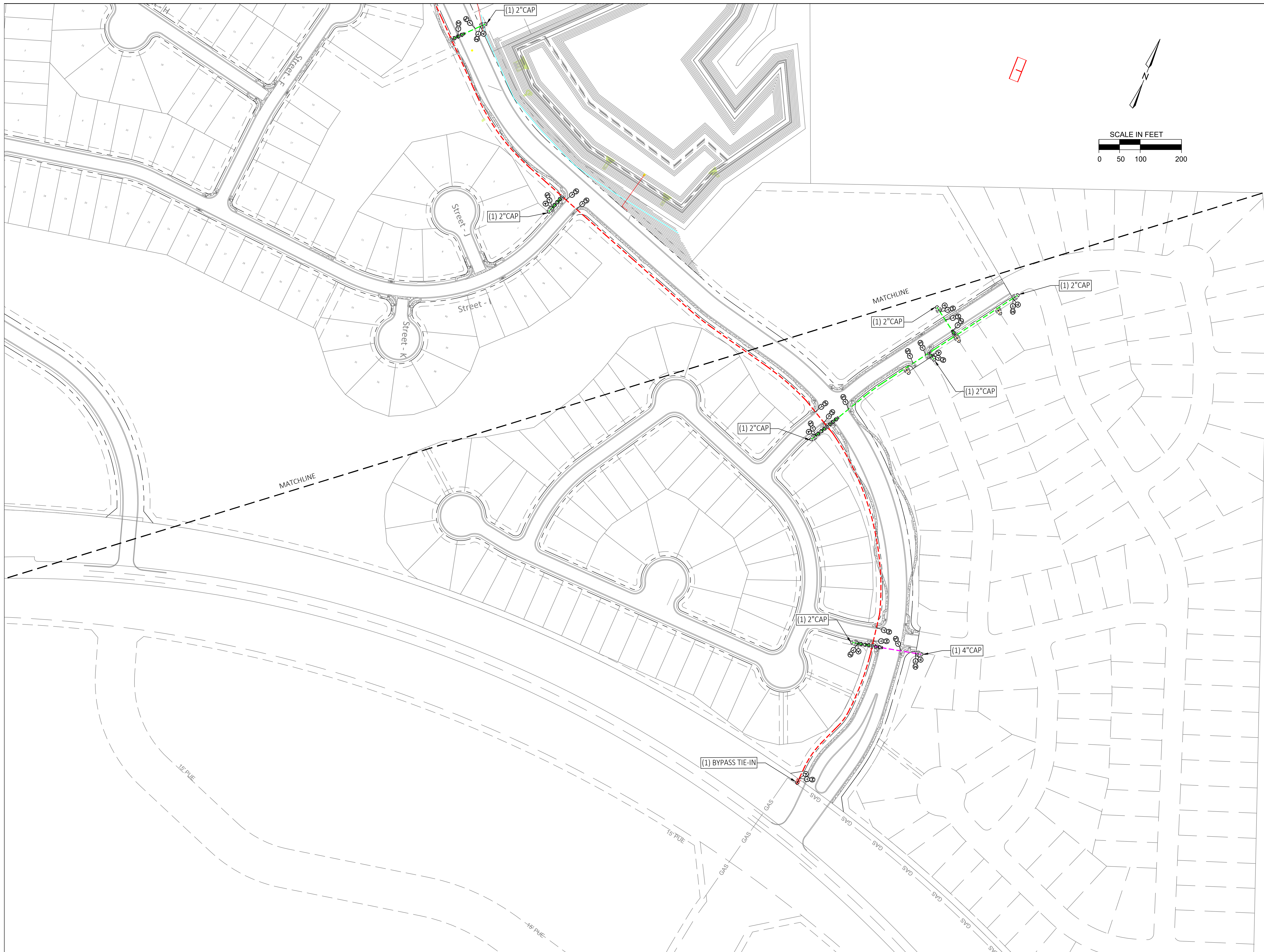
AVERAGE HOME SIZE: N/A
 ENTRY MONUMENTATION: TBD
 GAS SERVICE: ATMOS JOINT TRENCH: TBD
 STREETLIGHTS: DECORATIVE
 TELECOM / CATV: SPECTRUM / SUDDENLINK

PROJECT CONTACTS:
 DEVELOPER: PARMER RANCH PARTNERS LP
 PM: NATHANIEL KLUGMAR
 CIVIL ENG.: STEGER BIZZELL
 BRYAN MOORE
 PEC: TBD (888) 554-4732

D.U.C.T.
 DRY UTILITY CONSULTANTS OF TEXAS
 206 N RIDGE, MOODY, TX 76557
DryUtilityConsultants.com
 RYAN MCBEE (254) 644-7231
ryan.duct@gmail.com
 GAS COORDINATION EXHIBIT

PARMER RANCH PHASE 2 BLVD
 DATE: 03/03/22
 SHEET 1 OF 2

"PRELIMINARY FOR REVIEW AND COORDINATION"



SUMMARY OF MAJOR MATERIAL ITEMS: ATMOS

MATERIAL DESCRIPTION	QTY.
3/4" POLY PIPE	0
2" POLY PIPE	1131
4" POLY PIPE	120
8" POLY PIPE	4714
SERVICE TAP	3
POLY TIE-INS	0
BYPASS TIE-INS	1
2" SLEEVE	0
4" SLEEVE	464
6" SLEEVE	66
8" SLEEVE	0
10" SLEEVE	179
2" VALVE	7
4" VALVE	1
6" VALVE	0
8" VALVE	5
NON JOINT TRENCH (FT)	5965
Lots / Units Served (EA)	0

SYMBOL LEGEND

3/4" SERVICE STUB	---
2" PE MAIN	---
4" PE MAIN	---
8" PE MAIN	---
PE INLINE TEE	⊥
PE REDUCER	⊃
SERVICE CAP W/ LINE MARKER BALL	⊙
MAIN LINE CAP W/ LINE MARKER BALL	⊙
COUPLING	⊕
TEST STATION	⊕
LINE MARKER	⊕
ANODE	⊕
LINE MARKER BALL	⊕

NOTE:

- ALL 3/4" SERVICE STUBS WILL HAVE A EFV
- MAIN TAPPING TEE FOR EACH SERVICE STUB.
- THE LOCATIONS SHOWN ARE APPROXIMATIONS AND ARE NOT INTENDED TO SHOW EXACT LOCATIONS.

CONTRACTOR NOTES:

CONTRACTOR TO FIELD VERIFY LOCATION, TYPE, AND SIZE OF EXISTING UTILITIES. CONTRACTOR SHALL REPORT ANY DISCREPANCIES, OMISSIONS OR INCONSISTENCIES ON THE DRAWINGS TO THE ENGINEER FOR VERIFICATION BEFORE STARTING CONSTRUCTION. OWNER AND ENGINEER ARE NOT RESPONSIBLE FOR ANY ERRORS IN CONSTRUCTION WHERE SUCH DISCREPANCIES, OMISSIONS OR INCONSISTENCIES HAVE NOT BEEN PROPERLY REPORTED IN A TIMELY MANNER. CONTRACT AUSTIN AREA "ONE CALL CENTER" AT 1-800-245-4545 FOR EXISTING UTILITY LOCATIONS.

CONTRACTOR IS RESPONSIBLE FOR CONTACTING D.U.C.T. AND ACQUIRING AUTHORIZATION PRIOR TO ANY FIELD MODIFICATIONS; OTHERWISE CONTRACTOR WILL BE RESPONSIBLE. AT CONTRACTOR'S COST, FOR ANY AND ALL COSTS ASSOCIATED WITH ANY REQUIRED CORRECTIVE ACTIVITIES.

IT IS THE INTENT OF THESE PLANS THAT ALL WORK BE IN ACCORDANCE WITH THE ELECTRIC UTILITY PROVIDER'S SPECIFICATIONS AND ANY AUTHORITY HAVING JURISDICTION. NOTHING IN THIS PLAN IS INTENDED TO VIOLATE ANY OF THOSE SPECIFICATIONS OR ANY REQUIREMENT OF AN AUTHORITY HAVING JURISDICTION. SHOULD THE CONTRACTOR, CIVIL ENGINEER, OR DEVELOPER BELIEVE THERE IS ANY CONFLICT, THEY ARE TO BRING THAT CONFLICT TO THE ATTENTION OF D.U.C.T. SO THAT THE POSSIBLE CONFLICT CAN BE ADDRESSED AND RESOLVED.

CASING NOTE:

ALL ROAD CROSSINGS REQUIRE A PVC CASING:

- 3/4" SERVICE - 2" PVC CASING
- 1-1/4" SERVICE - 2" PVC CASING
- 2" PE MAIN - 4" PVC CASING
- 4" PE MAIN - 6" PVC CASING
- 6" PE MAIN - 8" PVC CASING

TRENCH UNIT PRICE NOTE:

TRENCH UNIT PRICE SHALL INCLUDE MISCELLANEOUS ITEMS SUCH AS TRACER WIRE, SAND BEDDING, BACKFILL, ETC.,

AVERAGE HOME SIZE: N/A
 ENTRY MONUMENTATION: TBD
 GAS SERVICE: ATMOS JOINT TRENCH: TBD
 STREETLIGHTS: DECORATIVE
 TELECOM / CATV: SPECTRUM / SUDDENLINK

PROJECT CONTACTS:

DEVELOPER: PARMER RANCH PARTNERS LP
 PM: NATHANIEL KLUGMAR
 CIVIL ENG.: STEGER BUZZELL
 BRYAN MOORE
 PEC: TBD (888) 554-4732

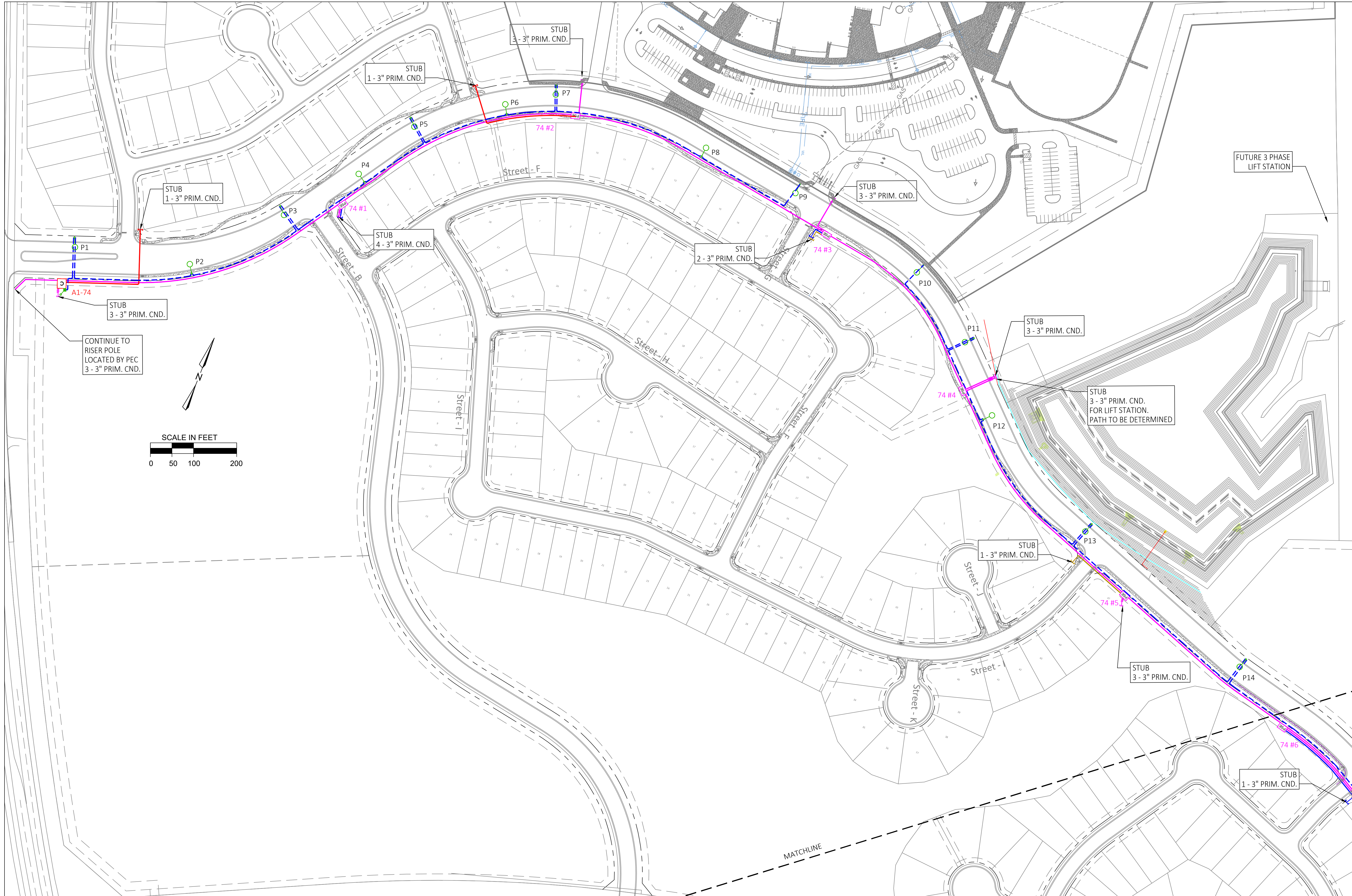
D.U.C.T.
 DRY UTILITY CONSULTANTS OF TEXAS
 206 N RIDGE, MOODY, TX 76557
 DryUtilityConsultants.com

RYAN MCBEE (254) 644-7231
 ryan.DUCT@GMAIL.COM

GAS COORDINATION EXHIBIT

**PARMER RANCH
 PHASE 2 BLVD**

DATE: 03/03/22
 SHEET 2 OF 2



CONTRACTOR NOTES:

CONTRACTOR TO FIELD VERIFY LOCATION, TYPE, AND SIZE OF EXISTING UTILITIES. CONTRACTOR SHALL REPORT ANY DISCREPANCIES, OMISSIONS OR INCONSISTENCIES ON THE DRAWINGS TO THE ENGINEER FOR VERIFICATION BEFORE STARTING CONSTRUCTION. OWNER AND ENGINEER ARE NOT RESPONSIBLE FOR ANY ERRORS IN CONSTRUCTION WHERE SUCH DISCREPANCIES, OMISSIONS OR INCONSISTENCIES HAVE NOT BEEN PROPERLY REPORTED IN A TIMELY MANNER. CONTACT AUSTIN AREA "ONE CALL CENTER" AT 1-800-245-4545 FOR EXISTING UTILITY LOCATIONS.

CONTRACTOR IS RESPONSIBLE FOR CONTACTING D.U.C.T. AND ACQUIRING AUTHORIZATION PRIOR TO ANY FIELD MODIFICATIONS. OTHERWISE CONTRACTOR WILL BE RESPONSIBLE. AT CONTRACTOR'S COST, FOR ANY AND ALL COSTS ASSOCIATED WITH ANY REQUIRED CORRECTIVE ACTIVITIES.

IT IS THE INTENT OF THESE PLANS THAT ALL WORK BE IN ACCORDANCE WITH THE ELECTRIC UTILITY PROVIDER'S SPECIFICATIONS AND ANY AUTHORITY HAVING JURISDICTION. NOTHING IN THIS PLAN IS INTENDED TO VIOLATE ANY OF THOSE SPECIFICATIONS OR ANY REQUIREMENT OF AN AUTHORITY HAVING JURISDICTION. SHOULD THE CONTRACTOR, CIVIL ENGINEER, OR DEVELOPER BELIEVE THERE IS ANY CONFLICT, THEY ARE TO BRING THAT CONFLICT TO THE ATTENTION OF D.U.C.T. SO THAT THE POSSIBLE CONFLICT CAN BE ADDRESSED AND RESOLVED.

SYMBOL LEGEND

3-4" CONDUITS 1000 MCM TRUNK	
3-3" CONDUITS 3Ø PRIMARY 1/Ø	
1-3" CONDUIT 1Ø PRIMARY 1/Ø	
1-3" CONDUIT SECONDARY TRIPLEX	
1-2" CONDUIT STREETLIGHT	
STREET LIGHT	
TRANSFORMER, PADMOUNT,	
COMBINATION PAD W/ P.S.E. & TRANSFORMER	
PRIMARY SECTIONALIZING ENCLOSURE (74, 56, OR 36 AS NOTED)	
SECONDARY ENCLOSURE (See Material Legend Summary)	

NOTES: (1) All primary and secondary conductor except for road crossings shall be placed in PUE or as designated by the Civil Engineer and accepted by PEC. (2) All secondary enclosures and other risers shall be placed immediately inside lot lines where appropriate. (3) All risers shall only have one 90 degree sweep. A gentle bend from PUE to the risers shall be used. No double 90's without permission from PEC. (4) All work shall be in accordance with PEC specifications and inspection requirements. (5) All primary and secondary conduit to include pull string per requirements. (6) All trenching lengths to include warning tape per requirements. (7) Contractor shall include miscellaneous items (sweeps, ground rods, etc.) required with in the units.

SUMMARY OF MAJOR MATERIAL ITEMS

MATERIAL DESCRIPTION	QTY.
1Ø Transformer Pad (EA)	0
74 P.S.E. & Combo Pad (EA)	2
56 P.S.E. & Combo Pad (EA)	1
36 P.S.E. & Combo Pad (EA)	0
74 P.S.E. & Pad (EA)	6
56 P.S.E. & Pad (EA)	1
Secondary Enclosures (EA)	5
Secondary METER Pedestal (EA)	0
Conduit, 4" PVC (FT)	0
Conduit, 3" PVC (FT)	20477
STLT Conduit, 2" & Light Wire, (FT)	6167
Trench (FT)	7325
Lots / Units Served (EA)	0

NOTE: CONDUIT UNIT PRICE SHALL INCLUDE MISCELLANEOUS ITEMS SUCH AS PULL TAPE/STRING, SPACERS, ETC., AS REQUIRED.

TRENCH UNIT PRICE SHALL INCLUDE MISCELLANEOUS ITEMS SUCH AS WARNING TAPE, SAND BEDDING, BACKFILL, ETC.,

AVERAGE HOME SIZE: N/A
ENTRY MONUMENTATION: TBD
GAS SERVICE: ATMOS JOINT TRENCH: TBD
STREETLIGHTS: DECORATIVE
TELECOM / CATV: SPECTRUM / SUDENLINK

PROJECT CONTACTS:

DEVELOPER: PARMER RANCH PARTNERS LP
PM: NATHANIEL KLUGMAR
CIVIL ENG.: STEGER BIZZELL
BRYAN MOORE
PEC: TBD (888) 554-4732

D.U.C.T.
DRY UTILITY CONSULTANTS OF TEXAS
206 N RIDGE, MOODY, TX 76557
DryUtilityConsultants.com

RYAN MCBEE (254) 644-7231
ryan.DUCT@GMAIL.COM

ELECTRIC COORDINATION EXHIBIT

SYMBOL	QTY.	MANUFACTURER	SPECIFICATION	DESCRIPTION	LAMP	LUMENS PER LAMP	WATTAGE
	17	STERNBERG	1A-1760LEDH-DR-R3-IL-40-T3-MDL16-CA	120-277V, SINGLE ARM	LED	11,520 LUMENS	92.3W
	0	STERNBERG	2A-1760LEDH-DR-R3-IL-40-T3-MDL16-CA	120-277V, DOUBLE ARM	LED	23,040 LUMENS	184.6W(EA)
	2	EOI	PEC STANDARD LED COBRA 100W EQUIVALENT FIXTURE	120V, SINGLE ARM	LED	5,400 LUMENS	40W

SYMBOL LEGEND

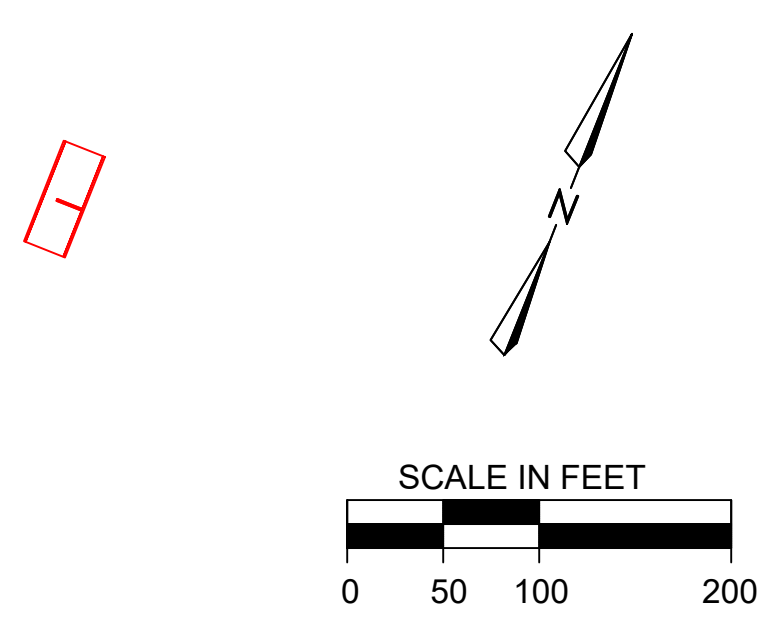
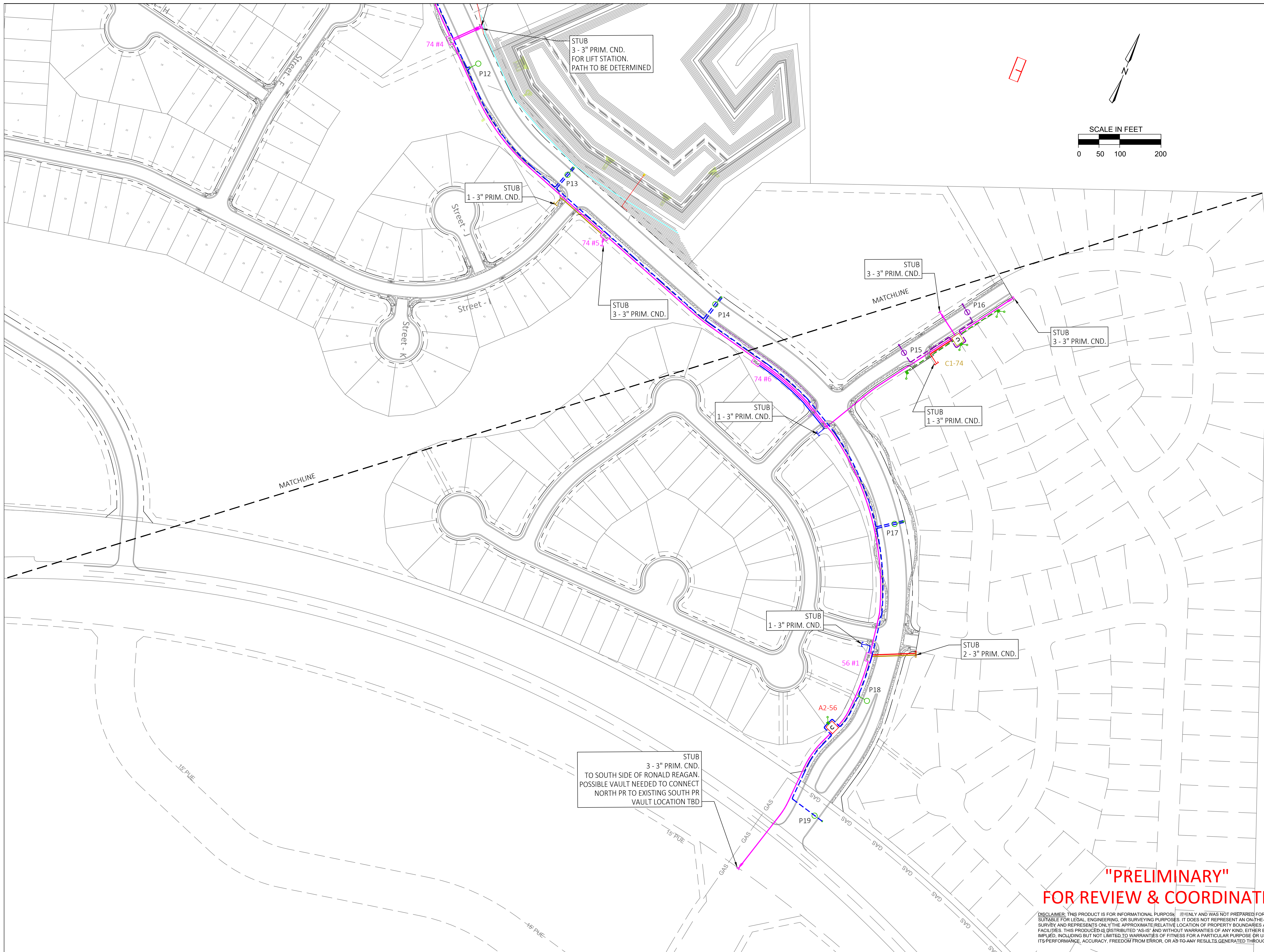
POINT OF SERVICE (PEC SECONDARY ENCLOSURE) SEE PEC DESIGN	
2" STREET LIGHT CONDUIT	
PROPOSED 120V	
EXISTING 120V	
PROPOSED 240V	
EXISTING 240V	
JUNCTION BOX - 11 X 18 QUAZITE	

**"PRELIMINARY"
FOR REVIEW & COORDINATION**

DISCLAIMER: THIS PRODUCT IS FOR INFORMATIONAL PURPOSES ONLY AND WAS NOT PREPARED FOR OR SUITABLE FOR LEGAL, ENGINEERING, OR SURVEYING PURPOSES. IT DOES NOT REPRESENT AN ON-THE-GROUND SURVEY AND REPRESENTS ONLY THE APPROXIMATE RELATIVE LOCATION OF PROPERTY BOUNDARIES AND FACILITIES. THIS PRODUCT IS DISTRIBUTED "AS-IS" AND WITHOUT WARRANTIES OF ANY KIND, EITHER EXPRESS OR IMPLIED, INCLUDING BUT NOT LIMITED TO WARRANTIES OF FITNESS FOR A PARTICULAR PURPOSE OR USE, OR AS TO ITS PERFORMANCE, ACCURACY, FREEDOM FROM ERROR, OR AS TO ANY RESULTS GENERATED THROUGH ITS USE.

DATE: 03/03/22
SHEET 1 OF 2

**PARMER RANCH
PHASE 2 BLVD**



CONTRACTOR NOTES:
 CONTRACTOR TO FIELD VERIFY LOCATION, TYPE, AND SIZE OF EXISTING UTILITIES. CONTRACTOR SHALL REPORT ANY DISCREPANCIES, OMISSIONS OR INCONSISTENCIES ON THE DRAWINGS TO THE ENGINEER FOR VERIFICATION BEFORE STARTING CONSTRUCTION. OWNER AND ENGINEER ARE NOT RESPONSIBLE FOR ANY ERRORS IN CONSTRUCTION WHERE SUCH DISCREPANCIES, OMISSIONS OR INCONSISTENCIES HAVE NOT BEEN PROPERLY REPORTED IN A TIMELY MANNER. CONTACT AUSTIN AREA ONE CALL CENTER AT 1-800-245-4545 FOR EXISTING UTILITY LOCATIONS.

CONTRACTOR IS RESPONSIBLE FOR CONTACTING D.U.C.T. AND ACQUIRING AUTHORIZATION PRIOR TO ANY FIELD MODIFICATIONS. OTHERWISE, CONTRACTOR WILL BE RESPONSIBLE, AT CONTRACTOR'S COST, FOR ANY AND ALL COSTS ASSOCIATED WITH ANY REQUIRED CORRECTIVE ACTIVITIES.

IT IS THE INTENT OF THESE PLANS THAT ALL WORK BE IN ACCORDANCE WITH THE ELECTRIC UTILITY PROVIDER'S SPECIFICATIONS AND ANY AUTHORITY HAVING JURISDICTION. NOTHING IN THIS PLAN IS INTENDED TO VIOLATE ANY OF THOSE SPECIFICATIONS OR ANY REQUIREMENT OF AN AUTHORITY HAVING JURISDICTION. SHOULD THE CONTRACTOR, CIVIL ENGINEER, OR DEVELOPER BELIEVE THERE IS ANY CONFLICT, THEY ARE TO BRING THAT CONFLICT TO THE ATTENTION OF D.U.C.T. SO THAT THE POSSIBLE CONFLICT CAN BE ADDRESSED AND RESOLVED.

SYMBOL LEGEND

3-4" CONDUITS 1000 MCM TRUNK	
3-3" CONDUITS 3Ø PRIMARY 3/O	
1-3" CONDUIT 1Ø PRIMARY 3/O	
1-3" CONDUIT SECONDARY TRIPLEX	
1-2" CONDUIT STREETLIGHT	
STREET LIGHT	
TRANSFORMER, PADMOUNT,	
COMBINATION PAD W/ P.S.E. & TRANSFORMER	
PRIMARY SECTIONALIZING ENCLOSURE (74, 56, OR 36 AS NOTED)	
SECONDARY ENCLOSURE (See Material Legend Summary)	

NOTES: (1) All primary and secondary conductor except for road crossings shall be placed in PUE or as designated by the Civil Engineer and accepted by PEC. (2) All secondary enclosures and other risers shall be placed immediately inside lot lines where appropriate. (3) All risers shall only have one 90 degree sweep. A gentle bend from PUE to the risers shall be used. No double 90's without permission from PEC. (4) All work shall be in accordance with PEC specifications and inspection requirements. (5) All primary and secondary conduit to include pull string per requirements. (6) All trenching lengths to include warning tape per requirements. (7) Contractor shall include miscellaneous items (sweeps, ground rods, etc.) required with in the units.

SUMMARY OF MAJOR MATERIAL ITEMS

MATERIAL DESCRIPTION	QTY.
1Ø Transformer Pad (EA)	0
74 P.S.E. & Combo Pad (EA)	2
56 P.S.E. & Combo Pad (EA)	1
36 P.S.E. & Combo Pad (EA)	0
74 P.S.E. & Pad (EA)	6
56 P.S.E. & Pad (EA)	1
Secondary Enclosures (EA)	5
Secondary METER Pedestal (EA)	0
Conduit, 4" PVC (FT)	0
Conduit, 3" PVC (FT)	20477
STLT Conduit, 2" & Light Wire, (FT)	6167
Trench (FT)	7325
Lots / Units Served (EA)	0

NOTE: CONDUIT UNIT PRICE SHALL INCLUDE MISCELLANEOUS ITEMS SUCH AS PULL TAPE/STRING, SPACERS, ETC., AS REQUIRED.

TRENCH UNIT PRICE SHALL INCLUDE MISCELLANEOUS ITEMS SUCH AS WARNING TAPE, SAND BEDDING, BACKFILL, ETC.,

AVERAGE HOME SIZE: N/A
 ENTRY MONUMENTATION: TBD
 GAS SERVICE: ATMOS JOINT TRENCH: TBD
 STREETLIGHTS: DECORATIVE
 TELECOM / CATV: SPECTRUM / SUDDENLINK

PROJECT CONTACTS:
 DEVELOPER: PARMER RANCH PARTNERS LP
 PM: NATHANIEL KLUGMAR
 CIVIL ENG.: STEGER BIZZELL
 BRYAN MOORE
 PEC: TBD (888) 554-4732

D.U.C.T.
 DRY UTILITY CONSULTANTS OF TEXAS
 206 N RIDGE, MOODY, TX 76557
 DryUtilityConsultants.com

RYAN MCBEE (254) 644-7231
 ryan.DUCT@GMAIL.COM

ELECTRIC COORDINATION EXHIBIT

**PARMER RANCH
 PHASE 2 BLVD**

DATE: 03/03/22
 SHEET 2 OF 2

**"PRELIMINARY"
 FOR REVIEW & COORDINATION**

DISCLAIMER: THIS PRODUCT IS FOR INFORMATIONAL PURPOSES ONLY AND WAS NOT PREPARED FOR OR SUITABLE FOR LEGAL, ENGINEERING, OR SURVEYING PURPOSES. IT DOES NOT REPRESENT AN ON-THE-GROUND SURVEY AND REPRESENTS ONLY THE APPROXIMATE RELATIVE LOCATION OF PROPERTY BOUNDARIES AND FACILITIES. THIS PRODUCT IS DISTRIBUTED "AS-IS" AND WITHOUT WARRANTIES OF ANY KIND, EITHER EXPRESS OR IMPLIED, INCLUDING BUT NOT LIMITED TO WARRANTIES OF FITNESS FOR A PARTICULAR PURPOSE OR USE, OR AS TO ITS PERFORMANCE, ACCURACY, FREEDOM FROM ERROR, OR AS TO ANY RESULTS GENERATED THROUGH ITS USE.