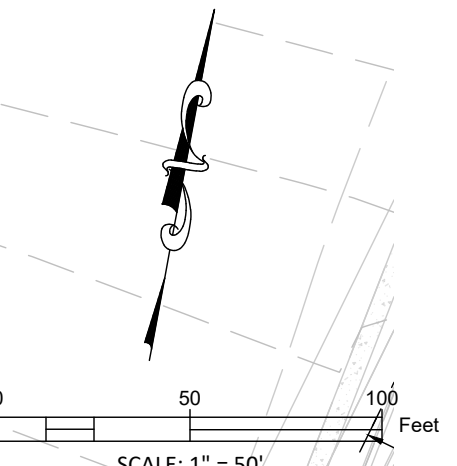


ALTERNATE 1 - WATER IMPROVEMENTS

These drawings are the sole property of STEGER & BIZZELL ENGINEERING, INC. The use of these drawings is hereby restricted to the original site for which they were prepared. Reproduction or reuse of these drawings in whole or in part without written permission of STEGER & BIZZELL ENGINEERING, INC. is strictly prohibited.



WARNING!
There are existing water pipelines, underground telephone cables and other above and below ground utilities in the vicinity of this project. The Contractor shall contact all appropriate companies prior to any construction in the area and determine if any conflicts exist. If so, the Contractor shall immediately contact the Engineer who shall revise the design as necessary.

LA-507.5.7 CITY OF GEORGETOWN FIRE HYDRANT COLOR CODE SYSTEM.
PRIVATE FIRE HYDRANT MAINTENANCE SHALL BE IN ACCORDANCE WITH NFPA 291.
A. ALL PRIVATE HYDRANT BARRELS WILL BE PAINTED RED WITH THE BONNET PAINTED USING THE HYDRANT FLOW STANDARD IN PARAGRAPH C OF THIS SECTION TO INDICATE FLOW. IT WILL BE THE CUSTOMER'S RESPONSIBILITY TO TEST AND MAINTAIN THEIR PRIVATE FIRE HYDRANT(S).
B. ALL PRIVATE FIRE HYDRANTS SHOULD BE INSPECTED, MAINTAINED, AND FLOW TESTED ANNUALLY AND COLOR CODED TO INDICATE THE EXPECTED FIRE FLOW FROM THE HYDRANT DURING NORMAL OPERATION. SUCH COLOR APPLIED TO THE FIRE HYDRANT BY PAINTING THE BONNET THE APPROPRIATE COLOR FOR THE EXPECTED FLOW CONDITION.
C. HYDRANT FLOW CODING STANDARDS. PUBLIC HYDRANTS BARRELS WILL BE PAINTED SILVER, THE HYDRANTS WILL BE FLOW TESTED, AND THE BONNET PAINTED USING THE HYDRANT FLOW STANDARD IN AS FOLLOWS:

FLOW	COLOR
GREATER THAN 1500 GPM	BLUE
1000- 1500 GPM	GREEN
500-999 GPM	ORANGE
LESS THAN 500 GPM	RED
NOT WORKING	BLACK OR BAGGED

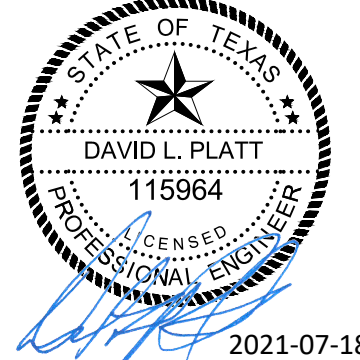
- LEGEND:**
- PROPOSED PRIVATE WATER
 - PROPOSED PRIVATE HYDRANT
 - WASTEWATER LINE
 - STORM SEWER LINE
 - EXISTING CONTOUR
 - PROPOSED CONTOUR

WATER NOTES:
1. STATIC PRESSURE CALCULATIONS:
PRESSURE PLANE = 1178'
HIGHEST ELEV. ON-SITE = 980'
ESTIMATED STATIC PRESSURE = 85.7 PSI
LOWEST ELEV. ON-SITE = 960'
ESTIMATED STATIC PRESSURE = 94.4 PSI
2. INDIVIDUAL SERVICE PRVS SHALL BE INSTALLED TO 80 PSI OR LESS.
3. ALL PROPOSED WATER LINES SHOWN ARE TO BE PRIVATE.

**BID DOCUMENT
NOT FOR
CONSTRUCTION**

NO.	REVISION	BY	DATE

DLP DESIGNED BY: 2021-04-21
DATE
DLP DRAWN BY: 2021-04-21
DATE
CHECKED BY: DATE
APPROVED BY: DATE



ADDRESS 1978 S. AUSTIN AVENUE GEORGETOWN, TX 78626
METRO 512.930.9412 TEXAS REGISTERED ENGINEERING FIRM F-181 WEB STEGERBIZZELL.COM
SERVICES >>ENGINEERS >>PLANNERS >>SURVEYORS

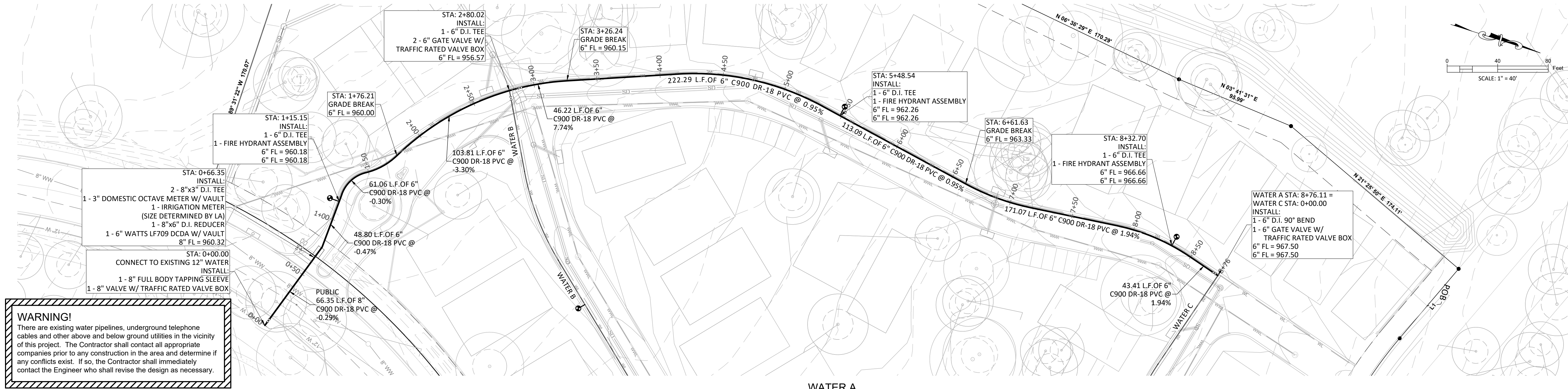
OVERALL WATER PLAN
for
THE COTTAGES AT PARMER RANCH
City of Georgetown ETJ
Williamson County, Texas

Project No:
22223

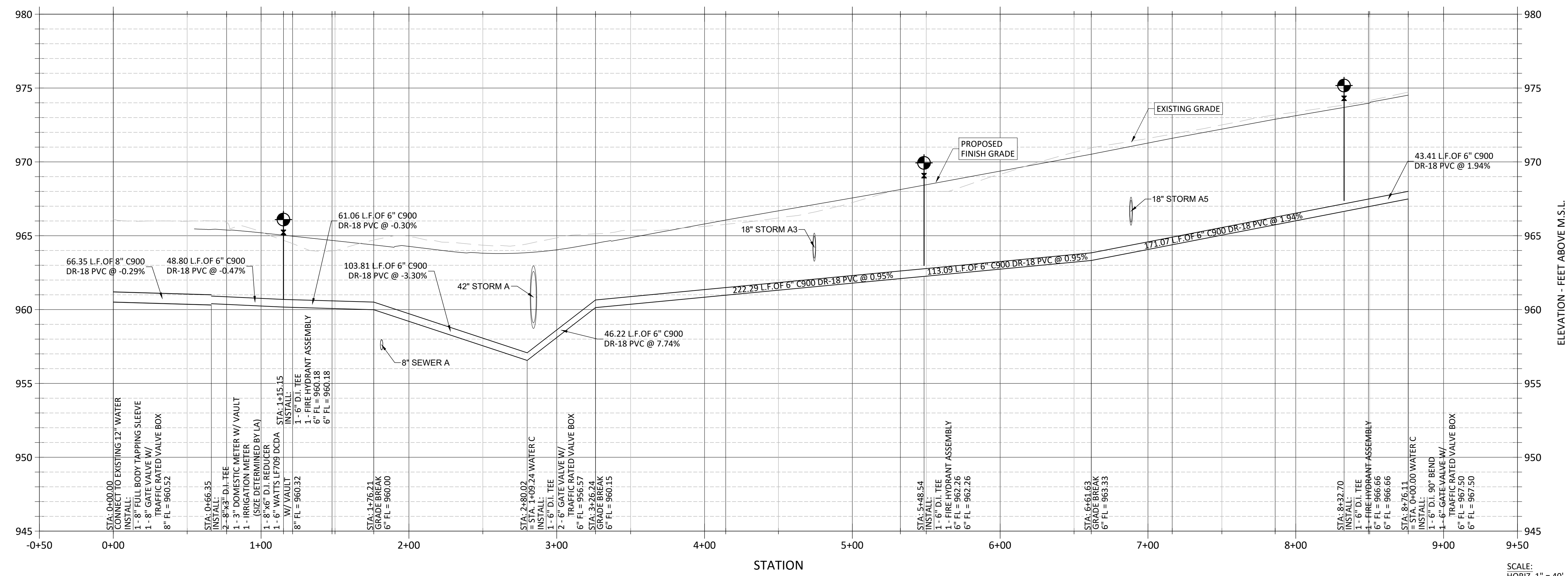
SHEET
8
of 43

ALTERNATE 1 - WATER IMPROVEMENTS

These drawings are the sole property of STEGER & BIZZELL ENGINEERING, INC. The use of these drawings is hereby restricted to the original site for which they were prepared. Reproduction or reuse of these drawings in whole or in part without written permission of STEGER & BIZZELL ENGINEERING, INC. is strictly prohibited.



WATER A

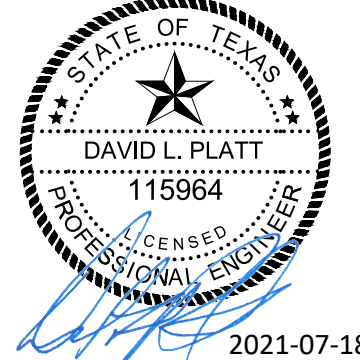


SCALE: HORIZ. 1" = 40' VERT. 1" = 4'

BID DOCUMENT
NOT FOR
CONSTRUCTION

NO.	REVISION	BY	DATE

DLP DESIGNED BY:	2021-04-21
DLP DRAWN BY:	2021-04-21
CHECKED BY:	DATE
APPROVED BY:	DATE



ADDRESS	1978 S. AUSTIN AVENUE	GEORGETOWN, TX 78626
METRO	512.930.9412	Texas Registered Engineering Firm F-181
SERVICES	>>ENGINEERS >>PLANNERS >>SURVEYORS	

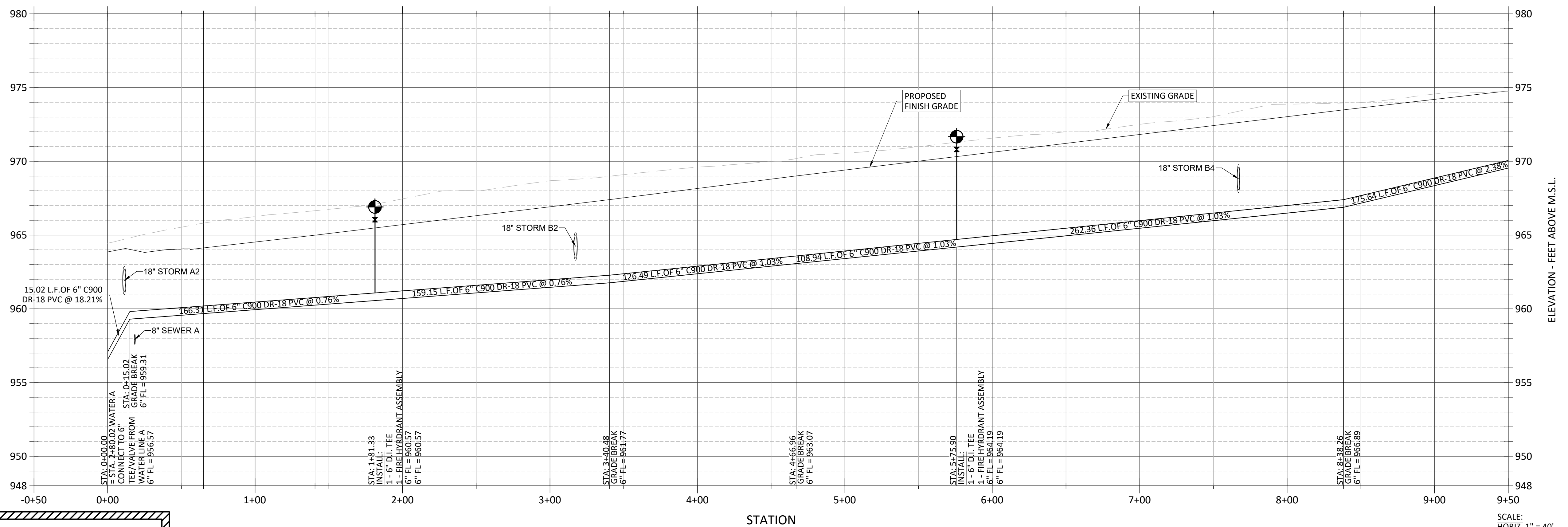
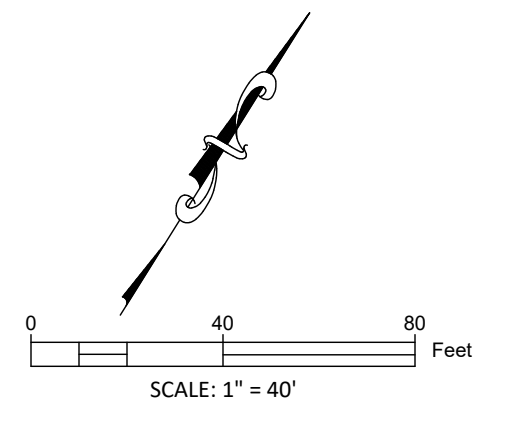
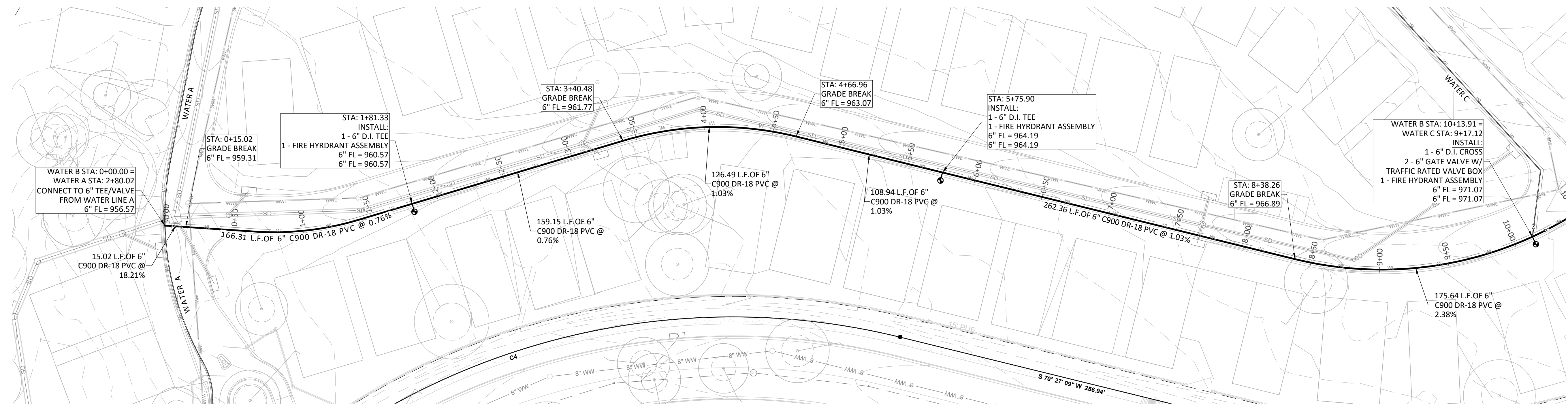
WATER LINE A PLAN & PROFILE
 for
THE COTTAGES AT PARMER RANCH
 City of Georgetown ETJ
 Williamson County, Texas

Project No:
22223

SHEET
9
of 43

ALTERNATE 1 - WATER IMPROVEMENTS

These drawings are the sole property of STEGER & BIZZELL ENGINEERING, INC. The use of these drawings is hereby restricted to the original site for which they were prepared. Reproduction or reuse of these drawings in whole or in part without written permission of STEGER & BIZZELL ENGINEERING, INC. is strictly prohibited.



WARNING!
 There are existing water pipelines, underground telephone cables and other above and below ground utilities in the vicinity of this project. The Contractor shall contact all appropriate companies prior to any construction in the area and determine if any conflicts exist. If so, the Contractor shall immediately contact the Engineer who shall revise the design as necessary.

**BID DOCUMENT
 NOT FOR
 CONSTRUCTION**

NO.	REVISION	BY	DATE

DLP DESIGNED BY: 2021-04-21
 DATE
 DLP DRAWN BY: 2021-04-21
 DATE
 CHECKED BY: DATE
 APPROVED BY: DATE

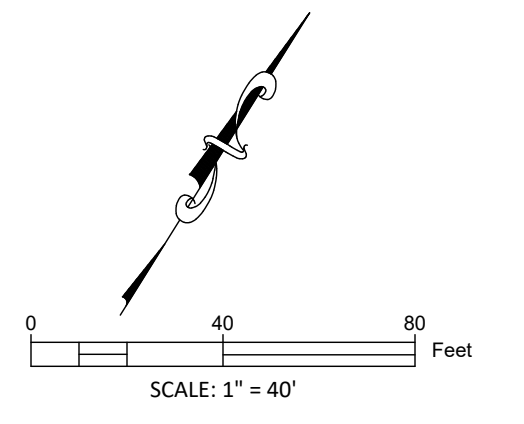
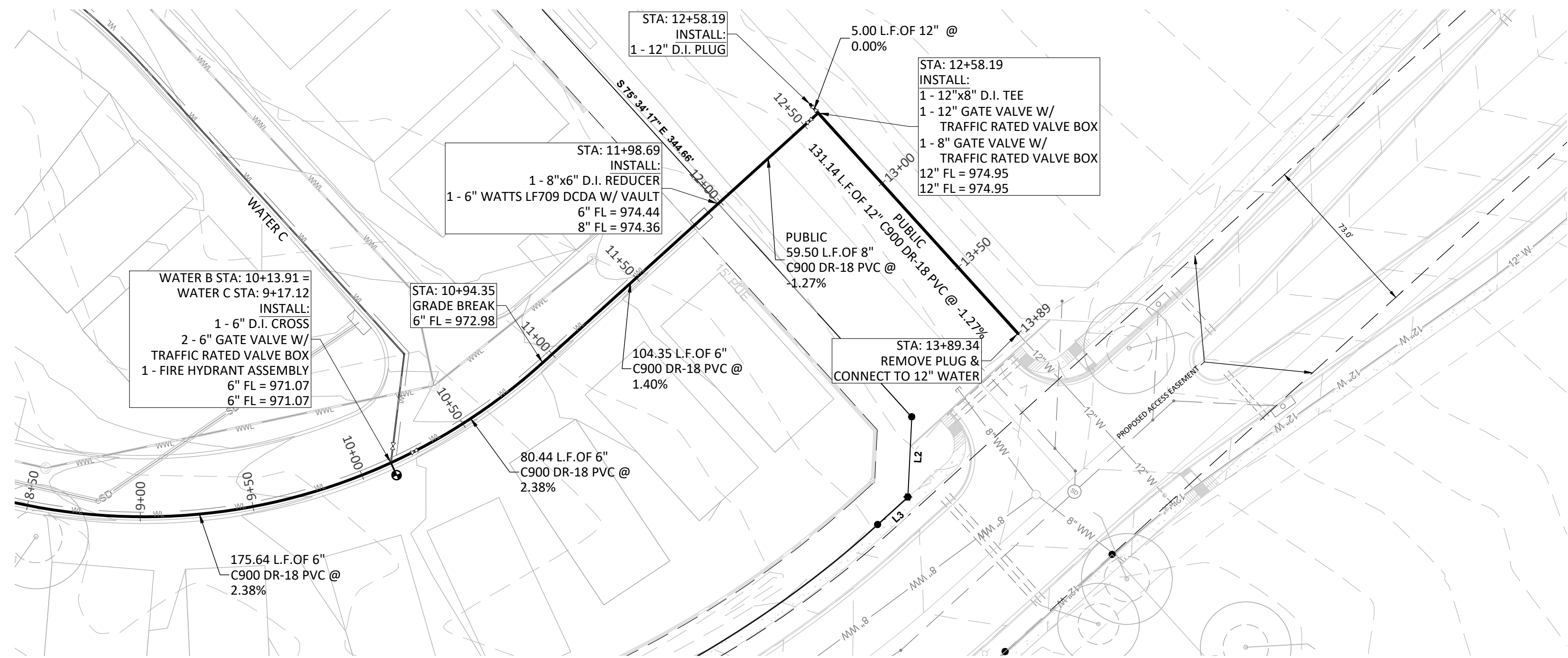


ADDRESS 1978 S. AUSTIN AVENUE GEORGETOWN, TX 78626
 METRO 512.930.9412 TEXAS REGISTERED ENGINEERING FIRM F-181 WEB STEGERBIZZELL.COM
 SERVICES >>ENGINEERS >>PLANNERS >>SURVEYORS

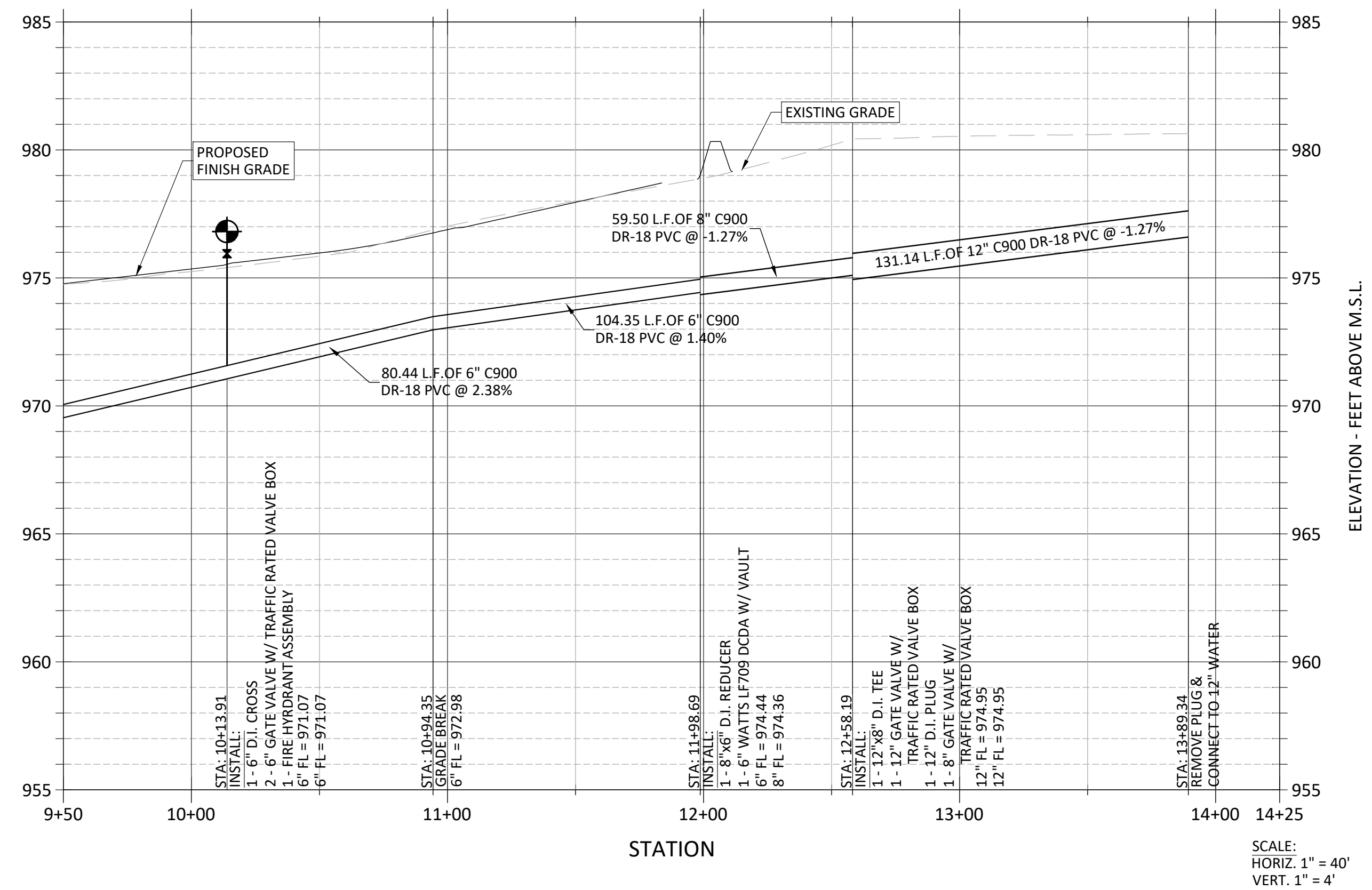
WATER LINE B PLAN & PROFILE STA 0+00 TO 9+50
 for
THE COTTAGES AT PARMER RANCH
 City of Georgetown ETJ
 Williamson County, Texas

Project No:
 22223
SHEET
10
 of 43

ALTERNATE 1 - WATER IMPROVEMENTS



WATER B

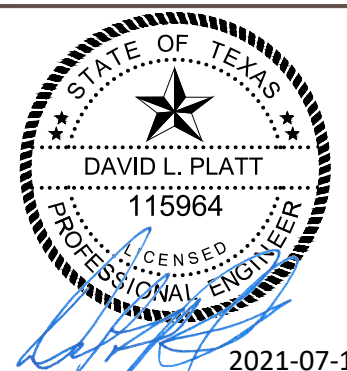


WARNING!
 There are existing water pipelines, underground telephone cables and other above and below ground utilities in the vicinity of this project. The Contractor shall contact all appropriate companies prior to any construction in the area and determine if any conflicts exist. If so, the Contractor shall immediately contact the Engineer who shall revise the design as necessary.

**BID DOCUMENT
 NOT FOR
 CONSTRUCTION**

NO.	REVISION	BY	DATE

DLP DESIGNED BY:	2021-04-21
DATE	
DLP DRAWN BY:	2021-04-21
DATE	
CHECKED BY:	DATE
APPROVED BY:	DATE



STEGER BIZZELL

1978 S. AUSTIN AVENUE GEORGETOWN, TX 78626
 512.930.9412 TEXAS REGISTERED ENGINEERING FIRM F-181 WEB STEGERBIZZELL.COM
 SERVICES TBPLS FIRM No. 10003700
 >>ENGINEERS >>PLANNERS >>SURVEYORS

WATER LINE B PLAN & PROFILE STA 9+50 TO END
 for
THE COTTAGES AT PARMER RANCH
 City of Georgetown ETJ
 Williamson County, Texas

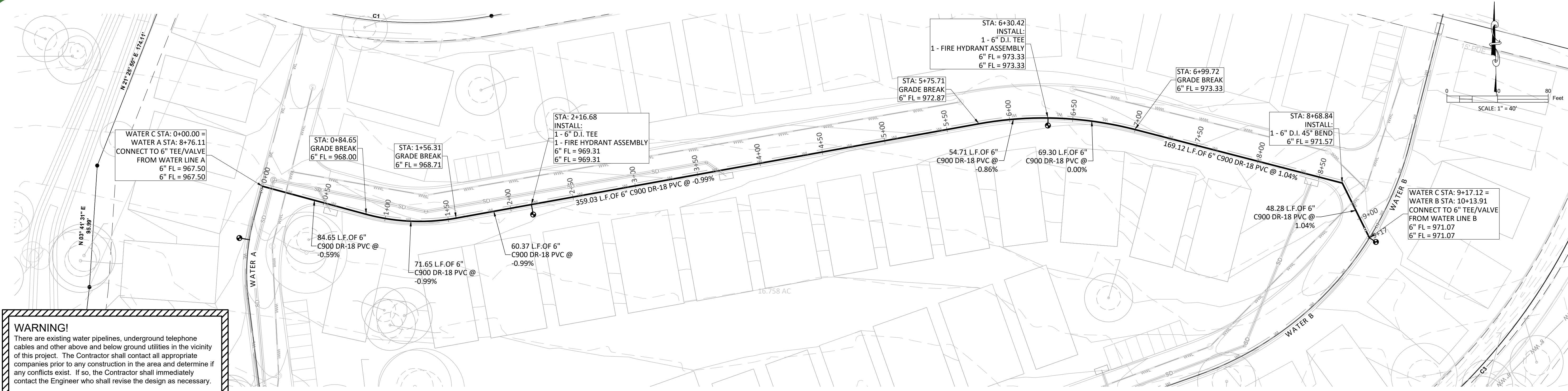
Project No:
22223
SHEET 11
 of 43

These drawings are the sole property of STEGER & BIZZELL ENGINEERING, INC. The use of these drawings is hereby restricted to the original site for which they were prepared. Reproduction or reuse of these drawings in whole or in part without written permission of STEGER & BIZZELL ENGINEERING, INC. is strictly prohibited.

P:\22000-22999\22223 Joe Owen NW WMCO MUD#202-PARCEL 25\CAD\Plans\011 Water Line B Plan & Profile STA 9+50 to END.dwg, 7/18/2021 10:54:40 PM, AutoCAD PDF (General Documentation).pc3

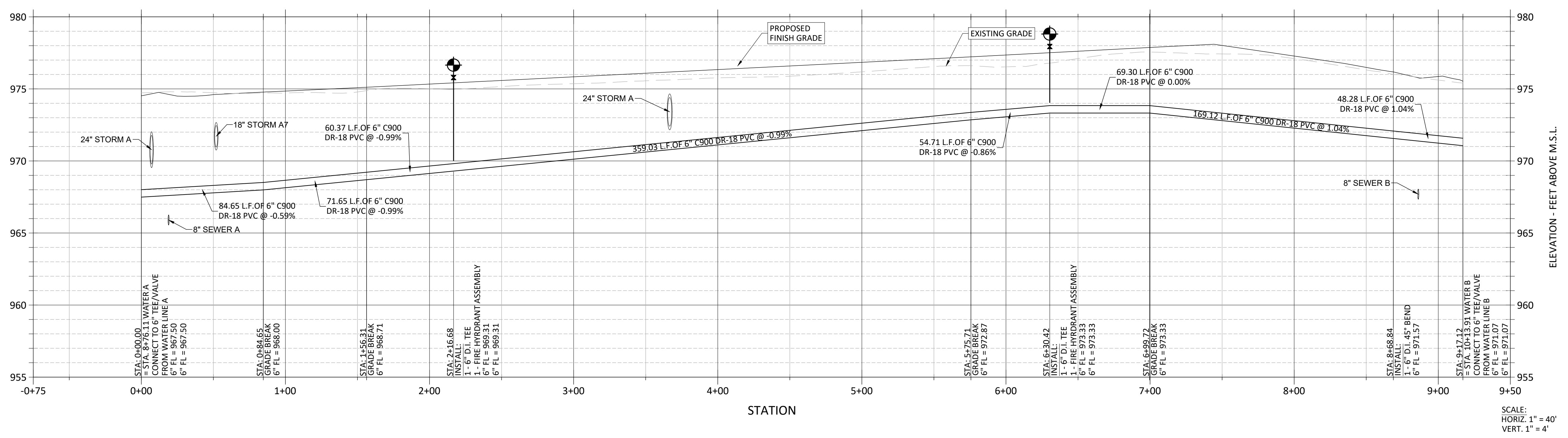
ALTERNATE 1 - WATER IMPROVEMENTS

These drawings are the sole property of STEGER & BIZZELL ENGINEERING, INC. The use of these drawings is hereby restricted to the original site for which they were prepared. Reproduction or reuse of these drawings in whole or in part without written permission of STEGER & BIZZELL ENGINEERING, INC. is strictly prohibited.



WARNING!
 There are existing water pipelines, underground telephone cables and other above and below ground utilities in the vicinity of this project. The Contractor shall contact all appropriate companies prior to any construction in the area and determine if any conflicts exist. If so, the Contractor shall immediately contact the Engineer who shall revise the design as necessary.

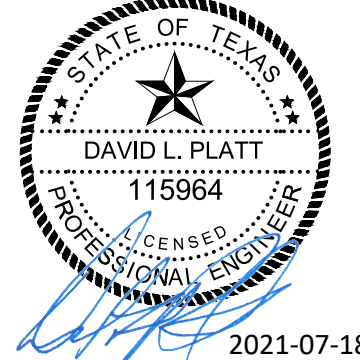
WATER C



BID DOCUMENT
 NOT FOR
 CONSTRUCTION

NO.	REVISION	BY	DATE

DESIGNED BY: DLP	DATE: 2021-04-21
DRAWN BY: DLP	DATE: 2021-04-21
CHECKED BY: _____	DATE: _____
APPROVED BY: _____	DATE: _____



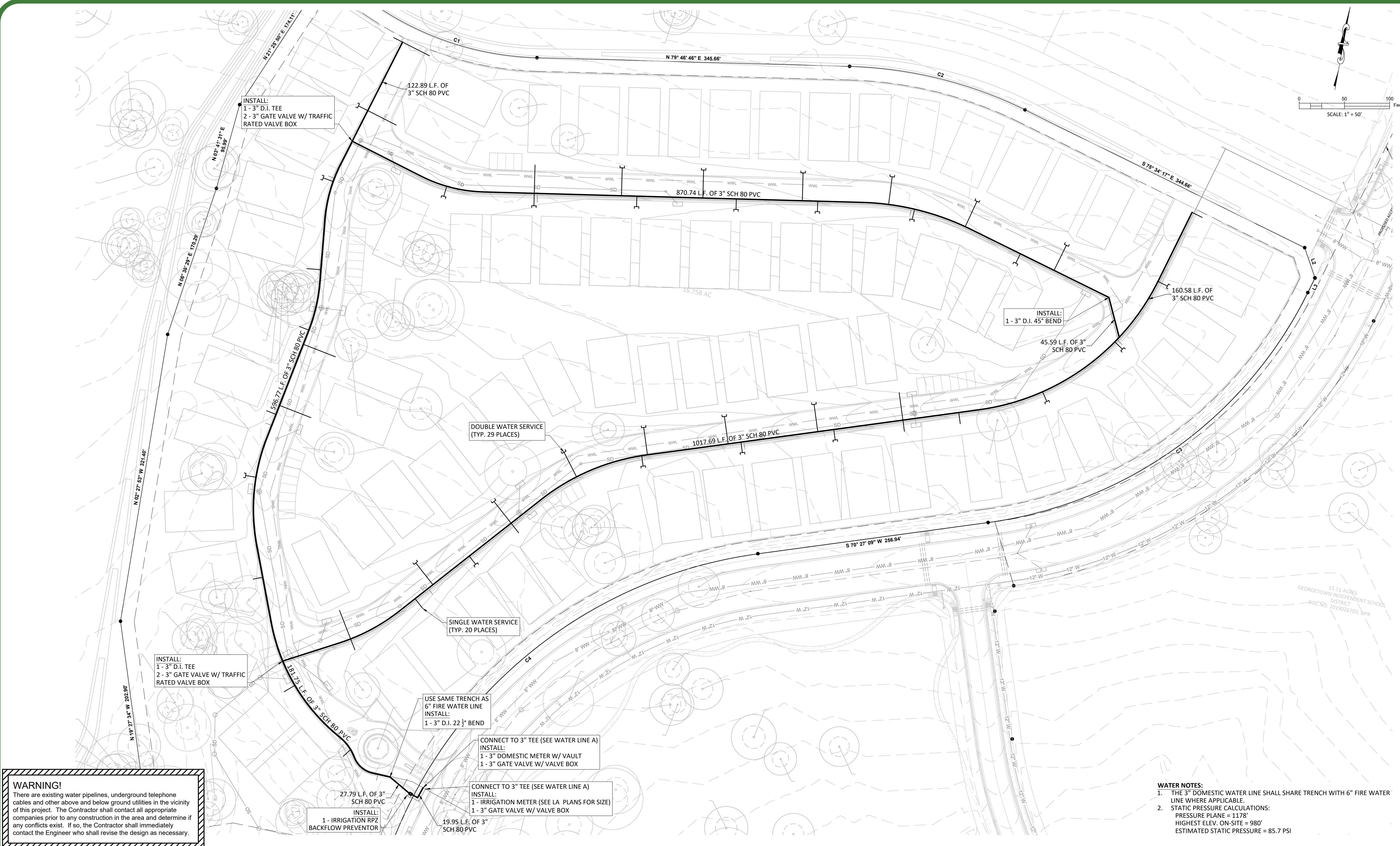
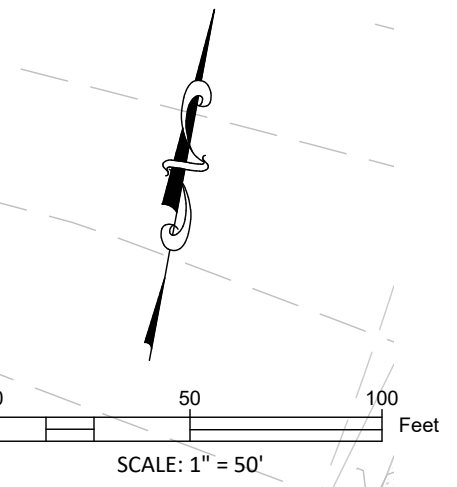
ADDRESS: 1978 S. AUSTIN AVENUE, GEORGETOWN, TX 78626
 METRO: 512.930.9412, TEXAS REGISTERED ENGINEERING FIRM F-181, WEB: STEGERBIZZELL.COM
 SERVICES: >>ENGINEERS >>PLANNERS >>SURVEYORS

WATER LINE C PLAN & PROFILE
 for
THE COTTAGES AT PARMER RANCH
 City of Georgetown ETJ
 Williamson County, Texas

Project No: 22223
SHEET 12
 of 43

ALTERNATE 1 - WATER IMPROVEMENTS

These drawings are the sole property of STEGER & BIZZELL ENGINEERING, INC. The use of these drawings is hereby restricted to the original site for which they were prepared. Reproduction or reuse of these drawings in whole or in part without written permission of STEGER & BIZZELL ENGINEERING, INC. is strictly prohibited.



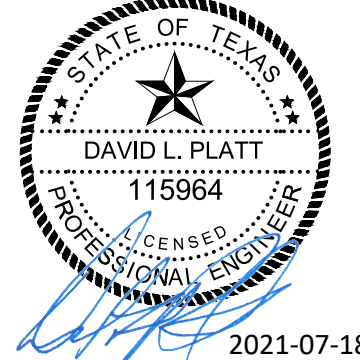
WARNING!
 There are existing water pipelines, underground telephone cables and other above and below ground utilities in the vicinity of this project. The Contractor shall contact all appropriate companies prior to any construction in the area and determine if any conflicts exist. If so, the Contractor shall immediately contact the Engineer who shall revise the design as necessary.

- WATER NOTES:**
1. THE 3" DOMESTIC WATER LINE SHALL SHARE TRENCH WITH 6" FIRE WATER LINE WHERE APPLICABLE.
 2. STATIC PRESSURE CALCULATIONS:
 PRESSURE PLANE = 1178'
 HIGHEST ELEV. ON-SITE = 980'
 ESTIMATED STATIC PRESSURE = 85.7 PSI

**BID DOCUMENT
 NOT FOR
 CONSTRUCTION**

NO.	REVISION	BY	DATE

DLP DESIGNED BY: 2021-04-21
 DATE
 DLP DRAWN BY: 2021-04-21
 DATE
 CHECKED BY: DATE
 APPROVED BY: DATE



ADDRESS 1978 S. AUSTIN AVENUE GEORGETOWN, TX 78626
 METRO 512.930.9412 TEXAS REGISTERED ENGINEERING FIRM F-181 WEB STEGERBIZZELL.COM
 SERVICES TBPLS FIRM No. 10003700 >>ENGINEERS >>PLANNERS >>SURVEYORS

DOMESTIC WATER PLAN
 for
THE COTTAGES AT PARMER RANCH
 City of Georgetown ETJ
 Williamson County, Texas

Project No:
22223
SHEET
13
 of 43