

NOTIFICATION OF ADDENDUM
ADDENDUM NO. THREE
DATED: August 21, 2021

PR South, Inc. on behalf of Northwest Williamson County Municipal Utility District No. 2
Cottages at Parmer Ranch
City of Georgetown Williamson County, Texas

NOTICE TO ALL BIDDERS:

This Addendum is issued to correct/clarify/modify the CONTRACT DOCUMENTS and SPECIFICATIONS and to provide additional information to the Bidder for the above referenced project as follows:

Plan Revisions:

- The following sheets were revised with the Addendum #3:
 - Sheet 17 - Sewer Line A Plan & Profile
 - Sheet 18 – Sewer Line B Plan & Profile
 - Sheet 40 – Striping & Signage Plan

Contract Documents and Specification Revisions:

- The following sections were updated in Addendum #3:
 - Section #00300 Bid Form

Questions/Clarifications:

1. Will a plumber be required for the wastewater install?
 - a. Not required for the civil site work.
2. Are contractors to construct building pads or just bring up to proposed contour?
 - a. Proposed contour.
3. Is landscaping a part of this contract?
 - a. No.
4. Is there any spec requirement for imported fill? Does it need to be Flex Base or can it be existing trenching spoils?
 - a. Please refer to City of Georgetown Standards and Specifications within drives/driveways. Any fill within vicinity of units will need to meet 79G.
 - b. Flex base or existing spoils if they meet the City of Georgetown specifications.
5. Does the masonry wall need to be engineered?
 - a. Wall is not a part of this contract and will be covered under a separate contract for landscaping. Wall has been removed from bid form.
6. Is the wrought iron fence included with this contract?
 - a. No, landscaping will be handled with a separate contract.
7. Are there any elevations on the walls or just 6' masonry screen walls?
 - a. Landscaping will be handled with a separate contract.

8. Does there need to be a bid tab item for the following for the irrigation meter, backflow preventor, and gate valve?
 - a. Yes, these items have been added to the bid form.
9. There are no tree wells on the bid tab, please advise.
 - a. An item has been added to the bid form for tree wells.
10. On Striping and Signage sheet, what are the limits of striping on Parmer Ranch Boulevard for the project?
 - a. The project is adding a right turn only lane which includes a transition area before and after the entrance. Quantities of the striping have been included on the sheet and a bid item has been added to the bid form.
11. Is there ribbon curb in front of the parking spaces?
 - a. Yes, there should be ribbon curb along the exterior of the parking spaces and 4" rollover curb everywhere else. This has been updated on the bid form and curb stops have been added to the plans.
12. Are the emergency access gate and GrassPave a part of this project or separate contract?
 - a. The emergency access gate will be bid with the landscaping/boundary wall and will not be included with this contract. GrassPave2 has been added to the bid form.
13. Storm inlet A8 and B7 are not shown on the profile pages.
 - a. Please see Storm Sewer Line A Plan & Profile – STA 10+00 to END (Sheet 27) of the plans for inlet A8 at station 13+38. Please see Storm Sewer Line B Plan & Profile (Sheet 30) of the plans for inlet B7 at station 10+15.
14. Will dry utilities be ready in time for the bid?
 - a. No.
15. Please verify the correct quantities for storm sewer:
 - a. 18" – 567 L.F., updated on bid form
 - b. 24" – 1,019 L.F., updated on bid form
 - c. 48" – N/A, removed from bid form
16. Please verify the correct quantities for HMAC:
 - a. 9,879 S.Y. including parking
17. Bid form calls for 60 L.F. of 8" DR-18 but no callouts. Please clarify. Is there trench safety for this?
 - a. Callouts have been added to the plans at intersections of water and wastewater.
 - b. Trench safety includes this trench as it is a segment of pipe. Sewer lengths have been updated.
18. Please verify 4" mountable curb quantity.
 - a. The bid form has been updated 5,984 L.F.
19. The width of the streets on the plans measures out to be 27' face to face on the site plans and show it to be 1.5' ribbon curb. However, the cross section on the street pages call out to be 26' face to face and 2' wide 4" mountable curb. Can you clarify this discrepancy?
 - a. The street is 26' face to face with 2' wide 4" mountable curb.

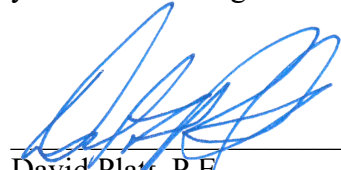
20. Is revegetation a part of this contract or will that be taken care of by landscaper?
 - a. Revegetation of all disturbed areas, including berm and channel, will be required as part of this contract.
21. Is there a hold down for the landscape areas of 4" or 6"?"
 - a. Yes, there will be a 6" hold down.
22. There are no FPE's in the plans. Will we be working off the FFE or will you be able to provide FPE's?
 - a. Please work off FFE and proposed contours.
23. How to handle channel and berm?
 - a. Include in general excavation and embankment bid items.
24. Will there be a borrow site, existing stockpile to grab material from, or will the grading change to results in more of a balance?
 - a. There is no borrow site/existing stockpile. It will be an import site.
25. After reviewing the plans and the bid form we noticed that the alternate to change the pipe to 6" and 8" is a different design than the 3". Would there be a second alternate for all the 3" pipe and all the gate valves going with the 3" pipe?
 - a. The public line would only require the 8". The alternate is replacing the 8" with a 6" fire line and a 3" domestic line. The 3" domestic line will share a trench with the 6" line after the entrance meter and have the same fittings as the 6" but in 3" diameter.
26. Bid form has a count of 2 for the 8" gate valves, but we are getting a count of 1. Can you clarify this quantity?
 - a. On the alternate plan, there is one 8" gate valve at the connection on Parmer Ranch (Sheet 9) and one 8" gate valve on the connection to the 12" extension along the future road (Sheet 11).
27. Bid form has a quantity of 6 for the 6" gate valves, but we are getting a count of 7. Can you clarify this quantity?
 - a. Please use six - 6" gate valves.
28. Bid form has 8 EA 3" gate valves, but in the plans, we are getting a count of 6 EA 3" gate valves. Can you clarify this quantity discrepancy?
 - a. Please use eight - 3" gate valves.
29. Plans had 1 EA 3" domestic meter w/ vault, but there is no bid item for this in the bid form. Can you clarify this discrepancy?
 - a. This has been added to the bid form for the alternate water bid.
30. Has the water line tie in already been stubbed across Parmer Ranch Blvd at the entrance?
 - a. The water stub has been constructed, and there will not be a bore or open cut across the roadway.
31. What items are tax exempt and what are private that will have tax on materials?
 - a. Assume all items are tax exempt at the time of bid.
32. You have both trench safety and then the trench safety design broken out as two bid items for water but not for wastewater. You only have trench safety for wastewater.

Do you want us to include the trench safety design for wastewater within the trench safety bid item?

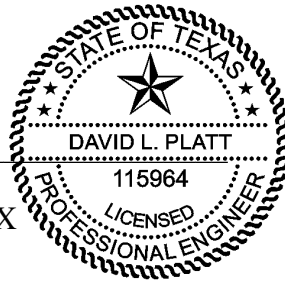
- a. Please include trench safety design for wastewater and storm within the trench safety bid items.
33. Are there going to be speed limit signs in this section?
- a. No, these are private drives.

You are required to acknowledge receipt of this addendum by entering the date, which appears at the top of this letter on the addendum acknowledgement portion of your BID FORM.

Failure to acknowledge receipt of this or any other addendum in your BID FORM will result in your bid not being read.



David Platt, P.E.
Steger Bizzell, Georgetown, TX

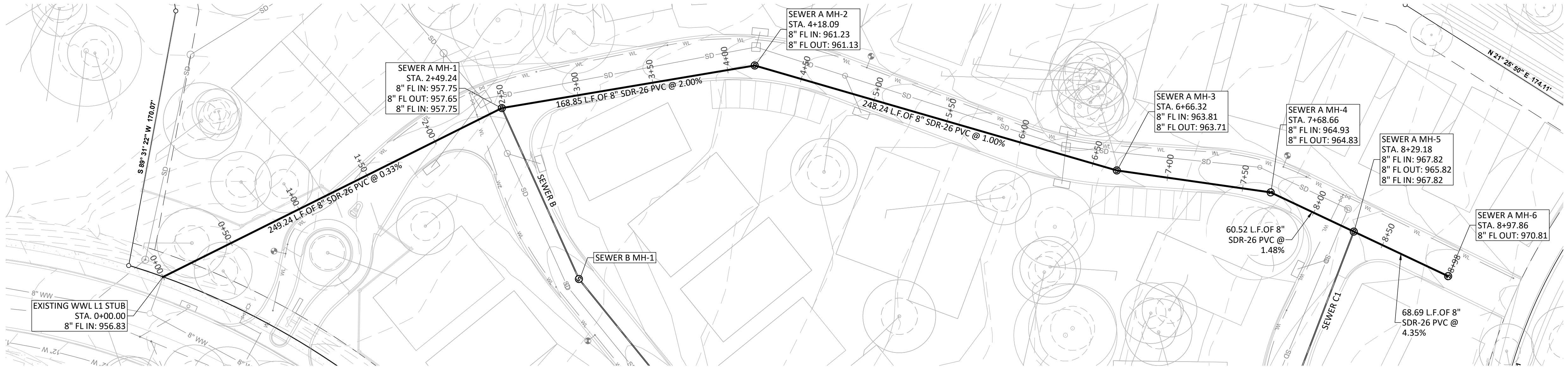


2021-08-21

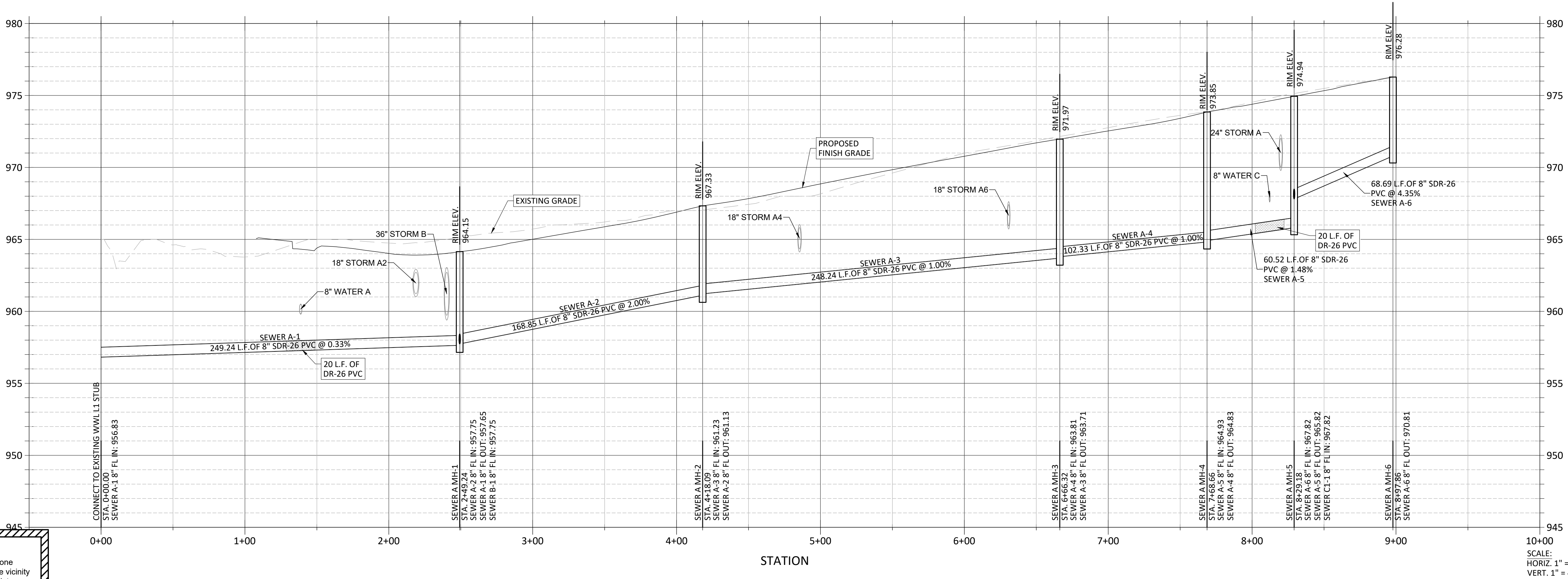
Date

Attachments

These drawings are the sole property of STEGER & BIZZELL ENGINEERING, INC. The use of these drawings is hereby restricted to the original site for which they were prepared. Reproduction or reuse of these drawings in whole or in part without written permission of STEGER & BIZZELL ENGINEERING, INC. is strictly prohibited.



SEWER A

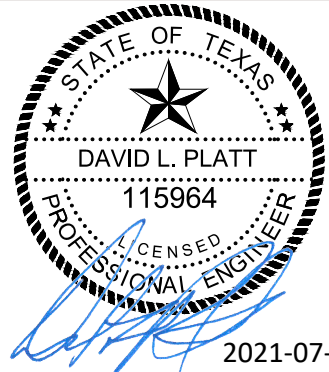


WARNING!
There are existing water pipelines, underground telephone cables and other above and below ground utilities in the vicinity of this project. The Contractor shall contact all appropriate companies prior to any construction in the area and determine if any conflicts exist. If so, the Contractor shall immediately contact the Engineer who shall revise the design as necessary.

**BID DOCUMENT
NOT FOR
CONSTRUCTION**

NO.	REVISION	BY	DATE

DLP
DESIGNED BY: 2021-04-21
DATE
DLP
DRAWN BY: 2021-04-21
DATE
CHECKED BY: DATE
APPROVED BY: DATE



ADDRESS 1978 S. AUSTIN AVENUE GEORGETOWN, TX 78626
METRO 512.930.9412 TEXAS REGISTERED ENGINEERING FIRM F-181 WEB STEGERBIZZELL.COM
SERVICES TBPLS FIRM No.10003700
->ENGINEERS >>PLANNERS >>SURVEYORS



SEWER LINE A PLAN & PROFILE
for
THE COTTAGES AT PARMER RANCH
City of Georgetown ETJ
Williamson County, Texas

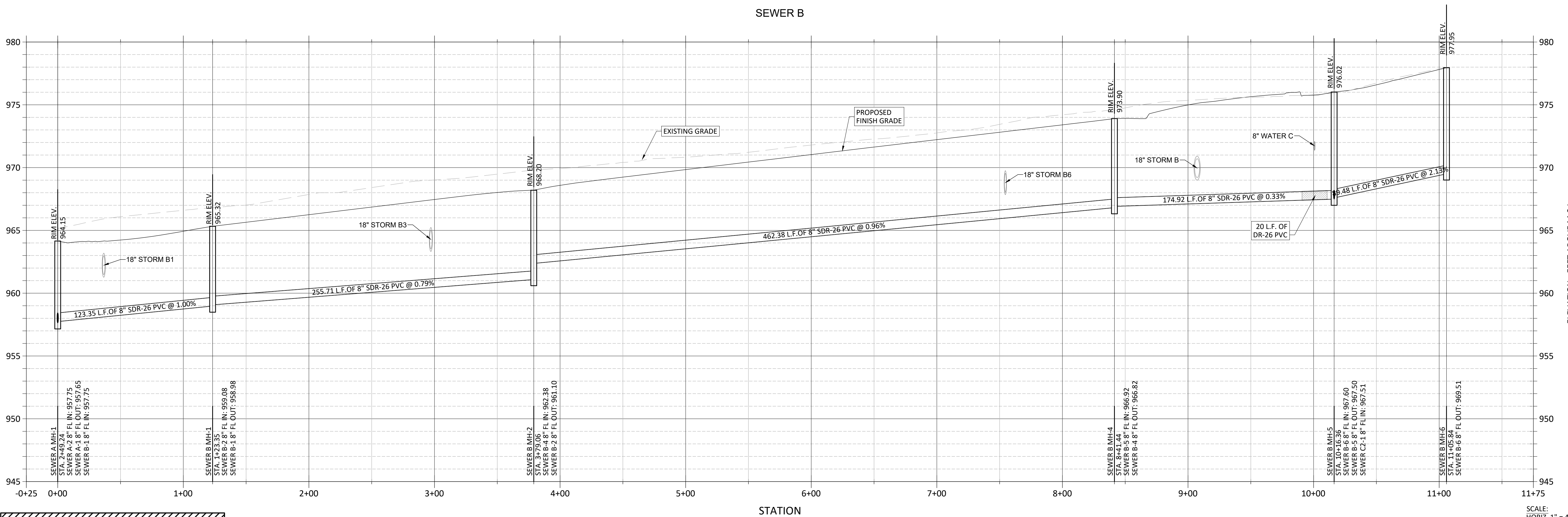
Project No:
22223

SHEET
17
of 43

These drawings are the sole property of STEGER & BIZZELL ENGINEERING, INC. The use of these drawings is hereby restricted to the original site for which they were prepared. Reproduction or reuse of these drawings in whole or in part without written permission of STEGER & BIZZELL ENGINEERING, INC. is strictly prohibited.



SEWER B

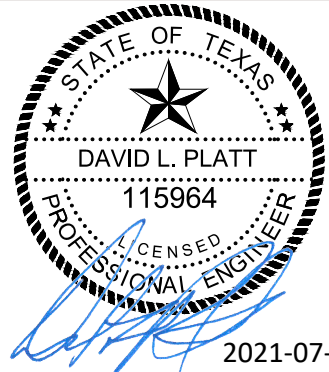


WARNING!
There are existing water pipelines, underground telephone cables and other above and below ground utilities in the vicinity of this project. The Contractor shall contact all appropriate companies prior to any construction in the area and determine if any conflicts exist. If so, the Contractor shall immediately contact the Engineer who shall revise the design as necessary.

**BID DOCUMENT
NOT FOR
CONSTRUCTION**

NO.	REVISION	BY	DATE

DLP
DESIGNED BY: 2021-04-21
DATE
DLP
DRAWN BY: 2021-04-21
DATE
CHECKED BY: DATE
APPROVED BY: DATE



STEGER & BIZZELL

ADDRESS 1978 S. AUSTIN AVENUE GEORGETOWN, TX 78626
METRO 512.930.9412 TEXAS REGISTERED ENGINEERING FIRM F-181 WEB STEGERBIZZELL.COM
SERVICES TBPLS FIRM No.10003700 >>ENGINEERS >>PLANNERS >>SURVEYORS

SEWER LINE B PLAN & PROFILE
for
THE COTTAGES AT PARMER RANCH
City of Georgetown ETJ
Williamson County, Texas

Project No:
22223
SHEET
18
of 43

These drawings are the sole property of STEGER & BIZZELL ENGINEERING, INC. The use of these drawings is hereby restricted to the original site for which they were prepared. Reproduction or reuse of these drawings in whole or in part without written permission of STEGER & BIZZELL ENGINEERING, INC. is strictly prohibited.

FIRE LANE
TOW AWAY
ZONE
NO PARKING
THIS SIDE
OF THE
STREET

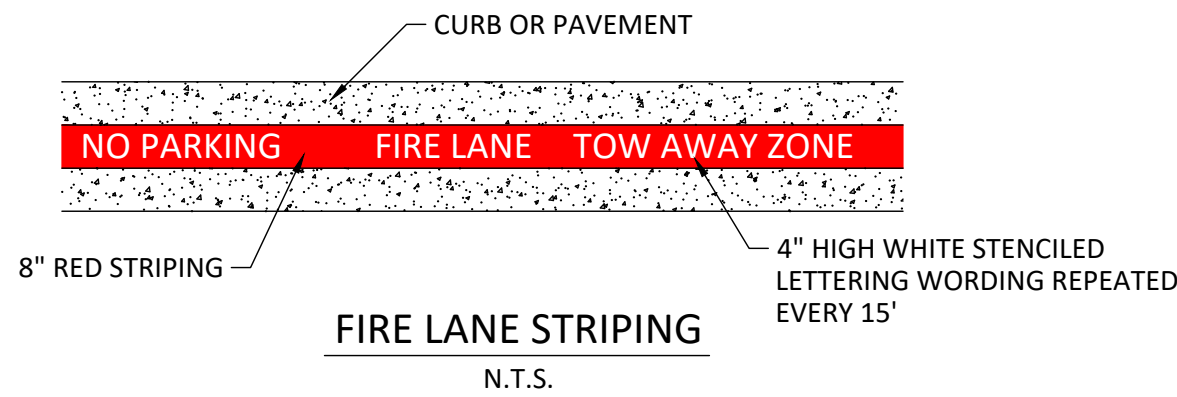
12" x 18"

To meet state requirements FOR STREET SIGNS the bottom of the sign has to be a minimum 7" above grade.

FIRE LANE SIGN
NTS

NOTES:

- STOP BARS SHALL BE INSTALLED AT ALL STOP SIGN LOCATIONS. STREET NAME SIGNS PER SD25 SHALL BE INSTALLED WITH ALL STOP SIGNS.
- ALL FIRE HYDRANTS SHALL BE IDENTIFIED BY THE INSTALLATION OF APPROVED BLUE REFLECTIVE PAVEMENT MARKERS. 2012 IFC 507.5.7 REFLECTIVE PAVEMENT MARKERS
- A SIGN SHALL BE INSTALLED AS SHOWN HEREON AND DETAILED IN THE NEXT SHEET 12-INCHES WIDE AND 18-INCHES IN HEIGHT WITH RED LETTERING ON A WHITE REFLECTIVE BACKGROUND AND BORDER IN RED STATING "FIRE LANE - TOW AWAY ZONE", ALONG WITH THE WORDS "THIS SIDE OF THE STREET". THE WORDS "FIRE LANE" BY THEMSELVES ARE NOT ACCEPTABLE. SIGN SHALL BE MOUNTED CONSPICUOUSLY ALONG THE EDGE OF THE FIRE LANE. SIGN MUST BE AT THE BEGINNING OF A STREET AND SPACED NO MORE THAN 250 FEET APART AT A MINIMUM HEIGHT OF 7 FEET ABOVE FINISHED GRADE.



FIRE LANE STRIPING NOTES:

- FIRE LANES SHALL BE COMPLIANT WITH 2012 IFC 503.3 AND SECTION 10.16.070 OF THE CITY OF GEORGETOWN CODE OF ORDINANCES.
- ALL CURBS AND CURB ENDS SHALL BE PANTED RED WITH FOUR-INCH WHITE LETTERING STATING "NO PARKING -- FIRE LANE -- TOW AWAY ZONE". THE WORDS "FIRE LANE" BY THEMSELVES ARE NOT ACCEPTABLE.
- WORDING MAY NOT BE SPACED MORE THAN 30 FEET APART.

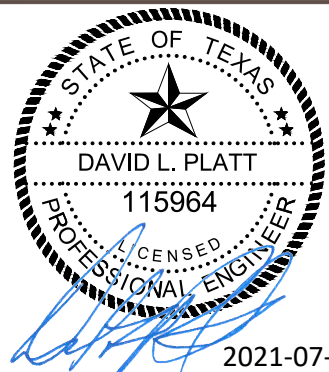
WARNING!

There are existing water pipelines, underground telephone cables and other above and below ground utilities in the vicinity of this project. The Contractor shall contact all appropriate companies prior to any construction in the area and determine if any conflicts exist. If so, the Contractor shall immediately contact the Engineer who shall revise the design as necessary.

BID DOCUMENT
NOT FOR
CONSTRUCTION

NO.	REVISION	BY	DATE

DLP
DESIGNED BY: 2021-04-21
DATE
DLP
DRAWN BY: 2021-04-21
DATE
CHECKED BY: DATE
APPROVED BY: DATE



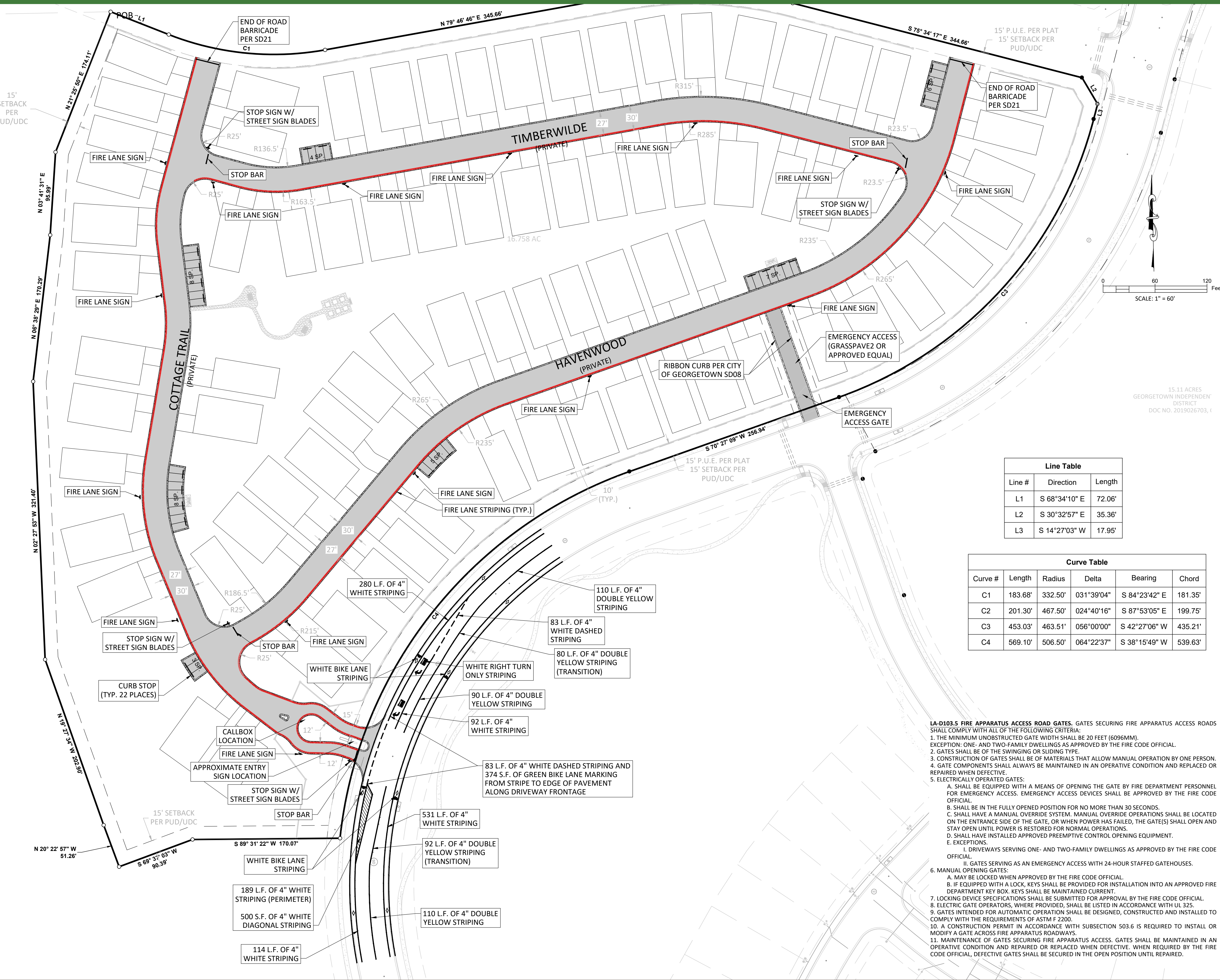
STEGER & BIZZELL

ADDRESS 1978 S. AUSTIN AVENUE GEORGETOWN, TX 78626
METRO 512.930.9412 TEXAS REGISTERED ENGINEERING FIRM F-181 WEB STEGERBIZZELL.COM
SERVICES TBPLS FIRM No.10003700
>>ENGINEERS >>PLANNERS >>SURVEYORS

STRIPING & SIGNAGE PLAN
for
THE COTTAGES AT PARKER RANCH
City of Georgetown ETJ
Williamson County, Texas

Project No:
22223

SHEET
40
of 43



Line Table		
Line #	Direction	Length
L1	S 68°34'10" E	72.06'
L2	S 30°32'57" E	35.36'
L3	S 14°27'03" W	17.95'

Curve Table					
Curve #	Length	Radius	Delta	Bearing	Chord
C1	183.68'	332.50'	031°39'04"	S 84°23'42" E	181.35'
C2	201.30'	467.50'	024°40'16"	S 87°53'05" E	199.75'
C3	453.03'	463.51'	056°00'00"	S 42°27'06" W	435.21'
C4	569.10'	506.50'	064°22'37"	S 38°15'49" W	539.63'

LA-D103.5 FIRE APPARATUS ACCESS ROAD GATES. GATES SECURING FIRE APPARATUS ACCESS ROADS SHALL COMPLY WITH ALL OF THE FOLLOWING CRITERIA:
1. THE MINIMUM UNOBSTRUCTED GATE WIDTH SHALL BE 20 FEET (6096MM).
EXCEPTION: ONE- AND TWO-FAMILY DWELLINGS AS APPROVED BY THE FIRE CODE OFFICIAL.
2. GATES SHALL BE OF THE SWINGING OR SLIDING TYPE.
3. CONSTRUCTION OF GATES SHALL BE OF MATERIALS THAT ALLOW MANUAL OPERATION BY ONE PERSON.
4. GATE COMPONENTS SHALL ALWAYS BE MAINTAINED IN AN OPERATIVE CONDITION AND REPLACED OR REPAIRED WHEN DEFECTIVE.
5. ELECTRICALLY OPERATED GATES:
A. SHALL BE EQUIPPED WITH A MEANS OF OPENING THE GATE BY FIRE DEPARTMENT PERSONNEL FOR EMERGENCY ACCESS. EMERGENCY ACCESS DEVICES SHALL BE APPROVED BY THE FIRE CODE OFFICIAL.
B. SHALL BE IN THE FULLY OPENED POSITION FOR NO MORE THAN 30 SECONDS.
C. SHALL HAVE A MANUAL OVERRIDE SYSTEM. MANUAL OVERRIDE OPERATIONS SHALL BE LOCATED ON THE ENTRANCE SIDE OF THE GATE, OR WHEN POWER HAS FAILED, THE GATE(S) SHALL OPEN AND STAY OPEN UNTIL POWER IS RESTORED FOR NORMAL OPERATIONS.
D. SHALL HAVE INSTALLED APPROVED PREEMPTIVE CONTROL OPENING EQUIPMENT.
E. EXCEPTIONS:
I. DRIVEWAYS SERVING ONE- AND TWO-FAMILY DWELLINGS AS APPROVED BY THE FIRE CODE OFFICIAL.
II. GATES SERVING AS AN EMERGENCY ACCESS WITH 24-HOUR STAFFED GATEHOUSES.
6. MANUAL OPENING GATES:
A. MAY BE LOCKED WHEN APPROVED BY THE FIRE CODE OFFICIAL.
B. IF EQUIPPED WITH A LOCK, KEYS SHALL BE PROVIDED FOR INSTALLATION INTO AN APPROVED FIRE DEPARTMENT KEY BOX. KEYS SHALL BE MAINTAINED CURRENT.
7. LOCKING DEVICE SPECIFICATIONS SHALL BE SUBMITTED FOR APPROVAL BY THE FIRE CODE OFFICIAL.
8. ELECTRIC GATE OPERATORS, WHERE PROVIDED, SHALL BE LISTED IN ACCORDANCE WITH UL 325.
9. GATES INTENDED FOR AUTOMATIC OPERATION SHALL BE DESIGNED, CONSTRUCTED AND INSTALLED TO COMPLY WITH THE REQUIREMENTS OF ASTM F 2200.
10. A CONSTRUCTION PERMIT IN ACCORDANCE WITH SUBSECTION 503.6 IS REQUIRED TO INSTALL OR MODIFY A GATE ACROSS FIRE APPARATUS ROADWAYS.
11. MAINTENANCE OF GATES SECURING FIRE APPARATUS ACCESS. GATES SHALL BE MAINTAINED IN AN OPERATIVE CONDITION AND REPAIRED OR REPLACED WHEN DEFECTIVE. WHEN REQUIRED BY THE FIRE CODE OFFICIAL, DEFECTIVE GATES SHALL BE SECURED IN THE OPEN POSITION UNTIL REPAIRED.

ADDENDUM #3

SECTION #00300

BID FORM

PROJECT IDENTIFICATION:

**PR South, Inc.
on behalf of
Northwest Williamson County Municipal Utility District No. 2**

**Cottages at Parmer Ranch
City of Georgetown
Williamson County, Texas**

THIS BID IS SUBMITTED TO:

**Steger Bizzell
1978 South Austin Avenue
Georgetown, Texas 78626**

- 1.01** The undersigned Bidder proposes and agrees, if this Bid is accepted, to enter into an Agreement with OWNER in the form included in the Bidding Documents to perform all Work as specified or indicated in the Bidding Documents for the prices and within the times indicated in this Bid and in accordance with the other terms and conditions of the Bidding Documents.
- 1.02** BIDDER understands and agrees that the OWNER has the right to reject any or all Bids and to waive any minor technicalities.
- 2.01** Bidder accepts all of the terms and conditions of the Advertisement or Invitation to Bid and Instructions to Bidders, including without limitation those dealing with the disposition of Bid security. The Bid will remain subject to acceptance for 90 days after the Bid opening, or for such longer period of time that Bidder may agree to in writing upon request of OWNER.
- 3.01** In submitting this Bid, Bidder represents, as set forth in the Agreement, that:
 - A.** Bidder has examined and carefully studied the Bidding Documents, the other related data identified in the Bidding Documents, and the following Addenda, receipt of all which is hereby acknowledged.

ADDENDUM #3

Addendum No.

Addendum Date

- B. Bidder has visited the Site and become familiar with and is satisfied as to the general, local and Site conditions that may affect cost, progress, and performance of the Work.
- C. Bidder is familiar with and is satisfied as to all federal, state and local laws and regulations that may affect cost, progress and performance of the Work.
- D. Bidder has carefully studied all: (1) reports of explorations and tests of subsurface conditions at or contiguous to the Site and all drawings of physical conditions in or relating to existing surface or subsurface structures at or contiguous to the Site which have been identified in the Supplementary Conditions as provided in paragraph 4.02 of the General Conditions.
- E. Bidder has obtained and carefully studied (or assumes responsibility for having done so) all additional or supplementary examinations, investigations, explorations, tests, studies and data concerning conditions (surface, subsurface and Underground Facilities) at or contiguous to the Site which may affect cost, progress, or performance of the Work or which relate to any aspect of the means, methods, techniques, sequences, and procedures of construction to be employed by Bidder, including applying the specific means, methods, techniques, sequences, and procedures of construction expressly required by the Bidding Documents to be employed by Bidder, and safety precautions and programs incident thereto.
- F. Bidder does not consider that any further examinations, investigations, explorations, tests, studies, or data are necessary for the determination of this Bid for performance of the Work at the price(s) bid and within the times and in accordance with the other terms and conditions of the Bidding Documents.
- G. Bidder is aware of the general nature of work to be performed by OWNER and others at the Site that relates to the Work as indicated in the Bidding Documents.
- H. Bidder has correlated the information known to Bidder, information and observations obtained from visits to the Site, reports and drawings identified in the Bidding Documents, and all additional examinations, investigations, explorations, tests, studies, and data with the Bidding Documents.

ADDENDUM #3

- I. Bidder has given ENGINEER written notice of all conflicts, errors, ambiguities, or discrepancies that Bidder has discovered in the Bidding Documents, and the written resolution thereof by ENGINEER is acceptable to Bidder.
- J. The Bidding Documents are generally sufficient to indicate and convey understanding of all terms and conditions for the performance of the Work for which this Bid is submitted.
- 4.01 Bidder further represents that this Bid is genuine and not made in the interest of or on behalf of any undisclosed individual or entity and is not submitted in conformity with any agreement or rules of any group, association, organization or corporation; Bidder has not directly or indirectly induced or solicited any other Bidder to submit a false or sham Bid; Bidder has not solicited or induced any individual or entity to refrain from bidding; and Bidder has not sought by collusion to obtain for itself any advantage over any other Bidder or over OWNER.
- 5.01 Bidder will complete the Work in accordance with the Contract Documents for the following price(s):

BID:

COTTAGES AT PARMER RANCH BID SET 8/21/2021					
<i>Item No.</i>	<i>Description of Item</i>	<i>Approx. Qty</i>	<i>Unit</i>	<i>Unit Price</i>	<i>Total</i>
A. EROSION AND SEDIMENTATION CONTROL					
A1	Furnish & Install & Remove Silt Fence, complete as detailed and specified	2,747	LF		
A2	Furnish & Install & Remove Stabilized Construction Entrance, complete as detailed and specified	2	EA		
A3	Furnish & Install & Remove 10' Curb Inlet Protection, complete as detailed and specified	15	EA		
A4	Furnish & Install & Remove Tree Protection Fence, complete as detailed and specified	4,623	LF		

ADDENDUM #3

COTTAGES AT PARMER RANCH BID SET 8/21/2021					
<i>Item No.</i>	<i>Description of Item</i>	<i>Approx. Qty</i>	<i>Unit</i>	<i>Unit Price</i>	<i>Total</i>
A5	Clearing and Grubbing, complete in place as detailed and specified	68,376	SY		
A6	Furnish, Install, Maintain & Remove Concrete Washout Basin, complete as detailed and specified	1	LS		
EROSION AND SEDIMENTATION CONTROL SUBTOTAL					
B. PAVEMENT AND SUBGRADE					
B1	Excavate material within project limits, as detailed and specified	1	LS		
B2	Furnish & Place Embankment within project limits, complete in place as detailed and specified	1	LS		
B3	Subgrade Preparation, complete in place as detailed and specified	11,932	SY		
B4	Furnish & Install 8" Compacted Flex Base, complete in place as detailed and specified	11,932	SY		
B5	Furnish & Install Curb Backfill, complete in place as detailed and specified	6,232	LF		
B6	Furnish & Install 2" HMA Type D Asphalt, complete in place as detailed and specified	9,879	SY		
B7	Furnish & Install GrassPave2 and 8" Compacted Base Material, complete in place as detailed and specified	190	SY		
B8	Furnish & Install 4" Mountable Curb and Gutter, complete in place as detailed and specified	5,984	LF		

ADDENDUM #3

COTTAGES AT PARMER RANCH BID SET 8/21/2021					
<i>Item No.</i>	<i>Description of Item</i>	<i>Approx. Qty</i>	<i>Unit</i>	<i>Unit Price</i>	<i>Total</i>
B9	Furnish & Install Ribbon Curb, complete in place as detailed and specified	898	LF		
B10	Furnish & Install Curb Ramp, complete in place as detailed and specified	3	EA		
PAVEMENT AND SUBGRADE SUBTOTAL					
C. DRAINAGE IMPROVEMENTS					
C1	Furnish & Install 18" CLASS III RCP (all depths), complete in place as detailed and specified	567	LF		
C2	Furnish & Install 24" CLASS III RCP (all depths), complete in place as detailed and specified	1019	LF		
C3	Furnish & Install 30" CLASS III RCP (all depths), complete in place as detailed and specified	477	LF		
C4	Furnish & Install 36" CLASS III RCP (all depths), complete in place as detailed and specified	222	LF		
C5	Furnish & Install 42" CLASS III RCP (all depths), complete in place as detailed and specified	381	LF		
C6	Furnish & Install & Remove Trench Safety for Stormwater	2,666	LF		
C7	Furnish & Install 4' Diameter Stormwater Manhole (all depths), complete in place as detailed and specified	1	EA		
C8	Furnish & Install 5'x5' Junction Box with Stormwater Manhole (all depths), complete in place as detailed and specified	4	EA		

ADDENDUM #3

COTTAGES AT PARMER RANCH BID SET 8/21/2021					
<i>Item No.</i>	<i>Description of Item</i>	<i>Approx. Qty</i>	<i>Unit</i>	<i>Unit Price</i>	<i>Total</i>
C9	Furnish & Install 6'x6' Junction Box with Stormwater Manhole (all depths), complete in place as detailed and specified	1	EA		
C10	Furnish & Install 10' Curb Inlet (all depths), complete in place as detailed and specified	15	EA		
DRAINAGE IMPROVEMENTS SUBTOTAL					
D. WATER IMPROVEMENTS					
D1	Furnish & Install 8" C900 PVC DR-18 Water Line including pipe, fittings, restraints, and all other appurtenances (all depths), complete in place as detailed and specified	3,176	LF		
D2	Furnish & Install 12" C900 PVC DR-18 Water Line including pipe, fittings, restraints, and all other appurtenances (all depths), complete in place as detailed and specified	136	LF		
D3	Furnish & Install 4" SCH 40 PVC Irrigation Sleeves, complete in place as detailed and specified	550	LF		
D4	Furnish & Install 8" Gate Valve and Box, complete in place as detailed and specified	8	EA		
D5	Furnish & Install 12" Gate Valve and Box, complete in place as detailed and specified	1	EA		
D6	Furnish & Install Fire Hydrant Assembly with 6" Gate Valve, complete in place as detailed and specified	8	EA		

ADDENDUM #3

COTTAGES AT PARMER RANCH BID SET 8/21/2021					
<i>Item No.</i>	<i>Description of Item</i>	<i>Approx. Qty</i>	<i>Unit</i>	<i>Unit Price</i>	<i>Total</i>
D7	Furnish & Install & Remove Trench Safety for Water/Irrigation	3,862	LF		
D8	Furnish Trench Safety Design for Water/ Irrigation	1	LS		
D9	Connect to Existing Water Line	2	EA		
D10	Furnish and Install cap for future connection	2	EA		
D11	Furnish and Install 8" full circle tapping sleeve and 8" gate valve (existing 12" water service)	1	EA		
D12	Furnish and Install Double Water Service connection per detail, complete in place as detailed and specified	29	EA		
D13	Furnish and Install Single Water Service connection per detail, complete in place as detailed and specified	20	EA		
D14	Furnish & Install Landscaping Connection/Service including 3" Irrigation Meter, Backflow Preventor, and 3" Gate Valve, complete in place as detailed and specified	1	LS		
WATER IMPROVEMENTS SUBTOTAL					
E. WASTEWATER IMPROVEMENTS					
E1	Furnish & Install 8" SDR-26 PVC 0'-8', complete in place as detailed and specified	2,339	LF		
E2	Furnish & Install 8" SDR-26 PVC 10'-12', complete in place as detailed and specified	391	LF		
E3	Furnish & Install 8" DR-26 PVC 8'-10', complete in place as detailed and specified	40	LF		

ADDENDUM #3

COTTAGES AT PARMER RANCH BID SET 8/21/2021					
<i>Item No.</i>	<i>Description of Item</i>	<i>Approx. Qty</i>	<i>Unit</i>	<i>Unit Price</i>	<i>Total</i>
E4	Furnish & Install 8" DR-26 PVC 10'-12', complete in place as detailed and specified	20	LF		
E5	Furnish & Install 4' diameter wastewater manhole (0'-8' depths), complete in place as detailed and specified	15	EA		
E6	Furnish & Install 4' diameter wastewater manhole (extra depth), complete in place as detailed and specified	11	VF		
E7	Furnish & Install & Remove Trench Safety for Wastewater	2,790	LF		
E8	Furnish and Install Double Wastewater Service connection per detail, complete in place as detailed and specified	36	EA		
E9	Furnish and Install Single Wastewater Service connection per detail, complete in place as detailed and specified	6	EA		
E10	Connect to existing wastewater stub out	1	EA		
WASTEWATER IMPROVEMENTS SUBTOTAL					
F. SIGNING, STRIPING, AND SITE IMPROVEMENTS					
F1	Furnish & Install Stop Sign and Street Name Signs, complete in place as detailed and specified	4	EA		
F2	Furnish & Install 24" White Stop Bar, complete in place as detailed and specified	48	SF		
F3	Furnish & Install Curb Stops, complete in place as detailed and specified	22	EA		

ADDENDUM #3

COTTAGES AT PARMER RANCH BID SET 8/21/2021					
<i>Item No.</i>	<i>Description of Item</i>	<i>Approx. Qty</i>	<i>Unit</i>	<i>Unit Price</i>	<i>Total</i>
F4	Furnish & Install Fire Lane Striping, complete in place as detailed and specified	3,287	LF		
F5	Furnish & Install Stop Sign and Street Name Signs, complete in place as detailed and specified	19	EA		
F6	Furnish & Install Right-Turn Lane Striping, complete in place as detailed and specified	1	LS		
F7	Furnish & Install End of Road Barricade, complete in place as detailed and specified	2	EA		
F8	Furnish & Install Blue Reflectorized Buttons, complete in place as detailed and specified	8	EA		
F9	Furnish & Install & Maintain Traffic Control at Connection to Parmer Ranch Blvd.	1	LS		
F10	Furnish & Install Tree Well, complete in place as detailed and specified	2440	SF		
F11	Furnish & Install Revegetation, complete in place as detailed and specified	28,072	SY		
SIGNING, STRIPING, AND SITE IMPROVEMENTS SUBTOTAL					
G. MISCELLANEOUS					
G1	Mobility and Move-In Related Expenses, Bonds, and Insurance, not to exceed 5% of Total Bid	1	LS		
G2	Provide SWPPP Setup, Maintenance and Reporting	1	LS		
MISCELLANEOUS SUBTOTAL					

ADDENDUM #3

COTTAGES AT PARMER RANCH BID SET 8/21/2021					
Item No.	Description of Item	Approx. Qty	Unit	Unit Price	Total
TOTAL					

TOTAL (Bid) \$ _____
(in Figures)

(in Words)

ADDENDUM #3

COTTAGES AT PARMER RANCH ALTERNATE 1 – WATER EXHIBIT 8/21/2021					
<i>Item No.</i>	<i>Description of Item</i>	<i>Approx. Qty</i>	<i>Unit</i>	<i>Unit Price</i>	<i>Total</i>
ALTERNATE 1 – D. WATER IMPROVEMENTS					
ALT D1	Furnish & Install 12" C900 PVC DR-18 Water Line including pipe, fittings, restraints, and all other appurtenances (all depths), complete in place as detailed and specified	136	LF		
ALT D2	Furnish & Install 8" C900 PVC DR-18 Water Line including pipe, fittings, restraints, and all other appurtenances (all depths), complete in place as detailed and specified	126	LF		
ALT D3	Furnish & Install 6" C900 PVC DR-18 Water Line including pipe, fittings, restraints, and all other appurtenances (all depths), complete in place as detailed and specified	2,981	LF		
ALT D4	Furnish & Install 3" SCH 80 PVC Water Line including pipe, fittings, restraints, and all other appurtenances (all depths), complete in place as detailed and specified	3,044	LF		
ALT D5	Furnish & Install 12" Gate Valve and Box, complete in place as detailed and specified	1	EA		
ALT D6	Furnish & Install 8" Gate Valve and Box, complete in place as detailed and specified	2	EA		
ALT D7	Furnish & Install 6" Gate Valve and Box, complete in place as detailed and	6	EA		

ADDENDUM #3

COTTAGES AT PARMER RANCH ALTERNATE 1 – WATER EXHIBIT 8/21/2021					
<i>Item No.</i>	<i>Description of Item</i>	<i>Approx. Qty</i>	<i>Unit</i>	<i>Unit Price</i>	<i>Total</i>
	specified				
ALT D8	Furnish & Install Fire Hydrant Assembly with 6" Gate Valve, complete in place as detailed and specified	8	EA		
ALT D9	Furnish & Install 6" Double Check Detector Assembly, complete in place as detailed and specified	2	EA		
ALT D10	Furnish & Install 3" Gate Valve and Box, complete in place as detailed and specified	8	EA		
ALT D11	Furnish & Install 3" Meter with Vault, complete in place as detailed and specified	1	EA		
ALT D12	Connect to Existing Water Line	2	EA		
ALT D13	Furnish and Install cap for future connection	2	EA		
ALT D14	Furnish and Install Double Water Service connection per detail, complete in place as detailed and specified	29	EA		
ALT D15	Furnish and Install Single Water Service connection per detail, complete in place as detailed and specified	20	EA		
ALT D16	Furnish & Install Landscaping Connection/Service including 3" Irrigation Meter, Backflow Preventor, and 3" Gate Valve, complete in place as detailed and specified	1	LS		
ALT D17	Furnish & Install & Remove Trench Safety for Water/Irrigation	6,287	LF		
ALT D18	Furnish Trench Safety Design for Water/ Irrigation	1	LS		

ADDENDUM #3

COTTAGES AT PARMER RANCH ALTERNATE 1 – WATER EXHIBIT 8/21/2021					
<i>Item No.</i>	<i>Description of Item</i>	<i>Approx. Qty</i>	<i>Unit</i>	<i>Unit Price</i>	<i>Total</i>
ALTERNATE 1 – WATER IMPROVEMENTS TOTAL					

ALTERNATE 1 – WATER IMPROVEMENTS TOTAL (*Bid*)

\$ _____
(in Figures)

(in Words)

ADDENDUM #3

Unit Prices have been computed in accordance with paragraph 11.03.B of the General Conditions. Bidder acknowledges that estimated quantities are not guaranteed, and are solely for the purpose of comparison of Bids, and final payment for all Unit Price Bid items will be based on actual quantities provided, determined as provided in the Contract Documents.

6.01 Bidder agrees that the Work will be substantially complete within 180 calendar days after the date of the written Notice-to-Proceed and to fully complete project and ready for final payment within 210 calendar days after the date of the written Notice to Proceed.

6.02 Bidder accepts the provisions of the Agreement as to liquidated damages in the event of failure to complete the Work within the times specified above, which shall be stated in the Supplemental Conditions.

6.03 The following documents are attached to and made a condition of this Bid:

A. Required Bid security in the form of _____;

B. Section 00400, Statement of Bidder's Experience, including Attachments.

7.01 The terms used in this Bid with initial capital letters have the meanings indicated in the Instructions to Bidders, the General Conditions, and the Supplementary Conditions.

SUBMITTED on _____, 20__.

If Bidder is:

An Individual

Name (typed or printed): _____

By: _____ (SEAL)

(Individual's signature)

Doing business as: _____

Business address: _____

Phone No.: _____ FAX No.: _____

ADDENDUM #3

A Partnership

Partnership Name: _____ (SEAL)

By: _____
(Signature of general partner -- attach evidence of authority to sign)

Name (typed or printed): _____

Business address: _____

Phone No.: _____ FAX No.: _____

A Corporation

Corporation Name: _____ (SEAL)

State of Incorporation: _____

Type (General Business, Professional, Service, Limited Liability): _____

By: _____
(Signature -- attach evidence of authority to sign)

Name (typed or printed): _____

Title: _____

(CORPORATE SEAL)

Attest _____
(Signature of Corporate Secretary)

Business address: _____

Phone No.: _____ FAX No.: _____

Date of Qualification to do business is _____.

ADDENDUM #3

A Joint Venture

Joint Venturer Name: _____ (SEAL)

By: _____
(Signature of joint venture partner -- attach evidence of authority to sign)

Name (typed or printed): _____

Title: _____

Business address: _____

Phone No.: _____ FAX No.: _____

Joint Venturer Name: _____ (SEAL)

By: _____
(Signature -- attach evidence of authority to sign)

Name (typed or printed): _____

Title: _____

Business address: _____

Phone No.: _____ FAX No.: _____

Phone and FAX Number, and Address for receipt of official communications:

(Each joint venturer must sign. The manner of signing for each individual, partnership, and corporation that is a party to the joint venture should be in the manner indicated above.)